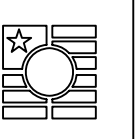
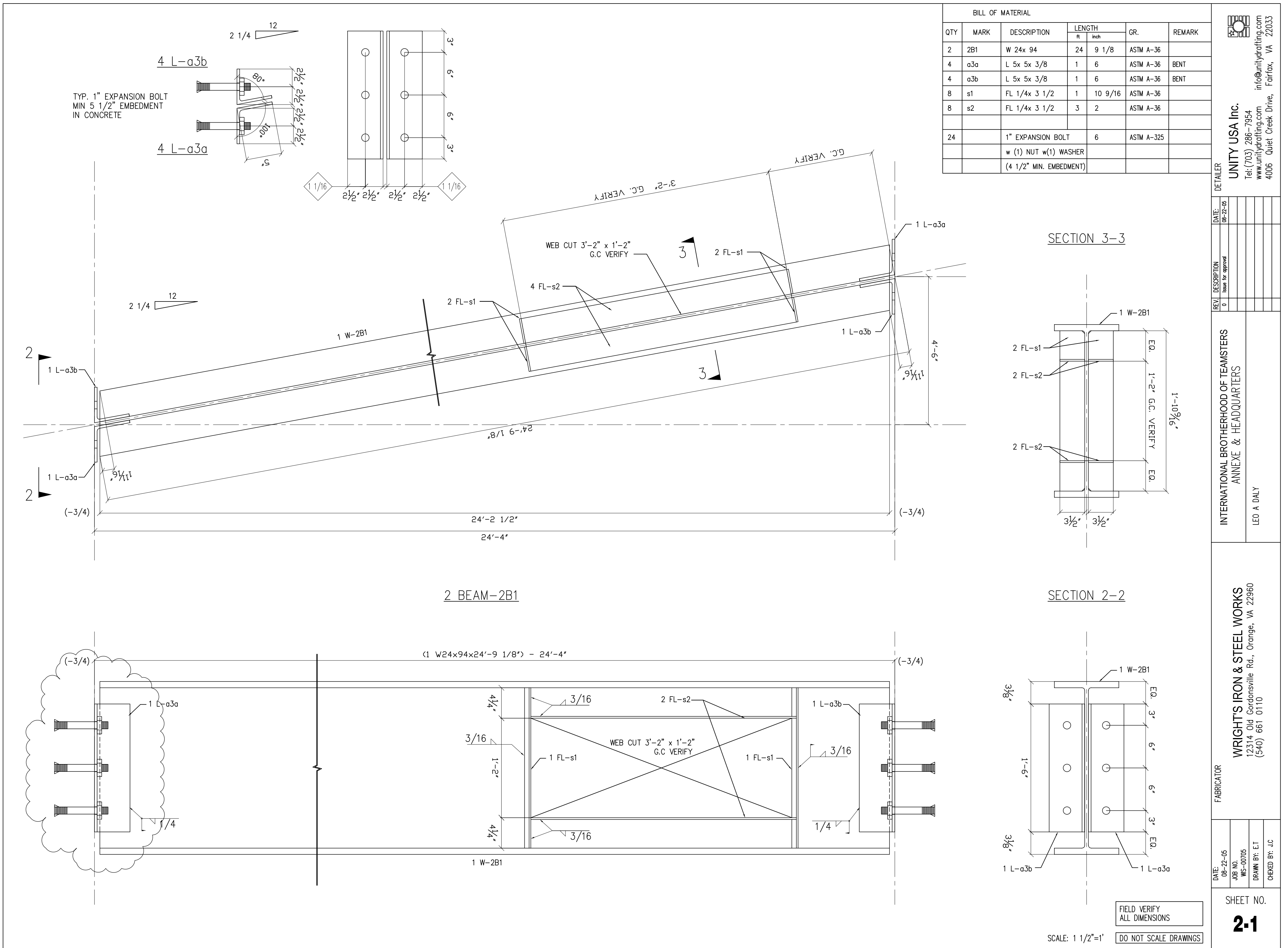


**ANNEX 6th & 4th FLOOR FRAMING PLAN**  
 SCALE: 1/4"=1'

FIELD VERIFY  
 ALL DIMENSIONS  
 DO NOT SCALE DRAWINGS

<b>E 1.1</b> SHEET NO.	DATE: 08-22-05	FABRICATOR  <b>WRIGHT'S IRON &amp; STEEL WORKS</b> 12314 Old Gordonsville Rd., Orange, VA 22960 (540) 661 0110	PROJECT  <b>INTERNATIONAL BROTHERHOOD OF TEAMSTERS          ANNEXE &amp; HEADQUARTERS</b>  LEO A DALY	REV. 0 DESCRIPTION Issue for approval	DATE: 08-22-05	DETAILER  <b>UNITY USA Inc.</b> Tel: (703) 286-7954 www.unitydrafting.com info@unitydrafting.com 4006 Quiet Creek Drive, Fairfax, VA 22033
	JOB NO. WS-00705					
	DRAWN BY: E.T					
	CHECKED BY: J.C					





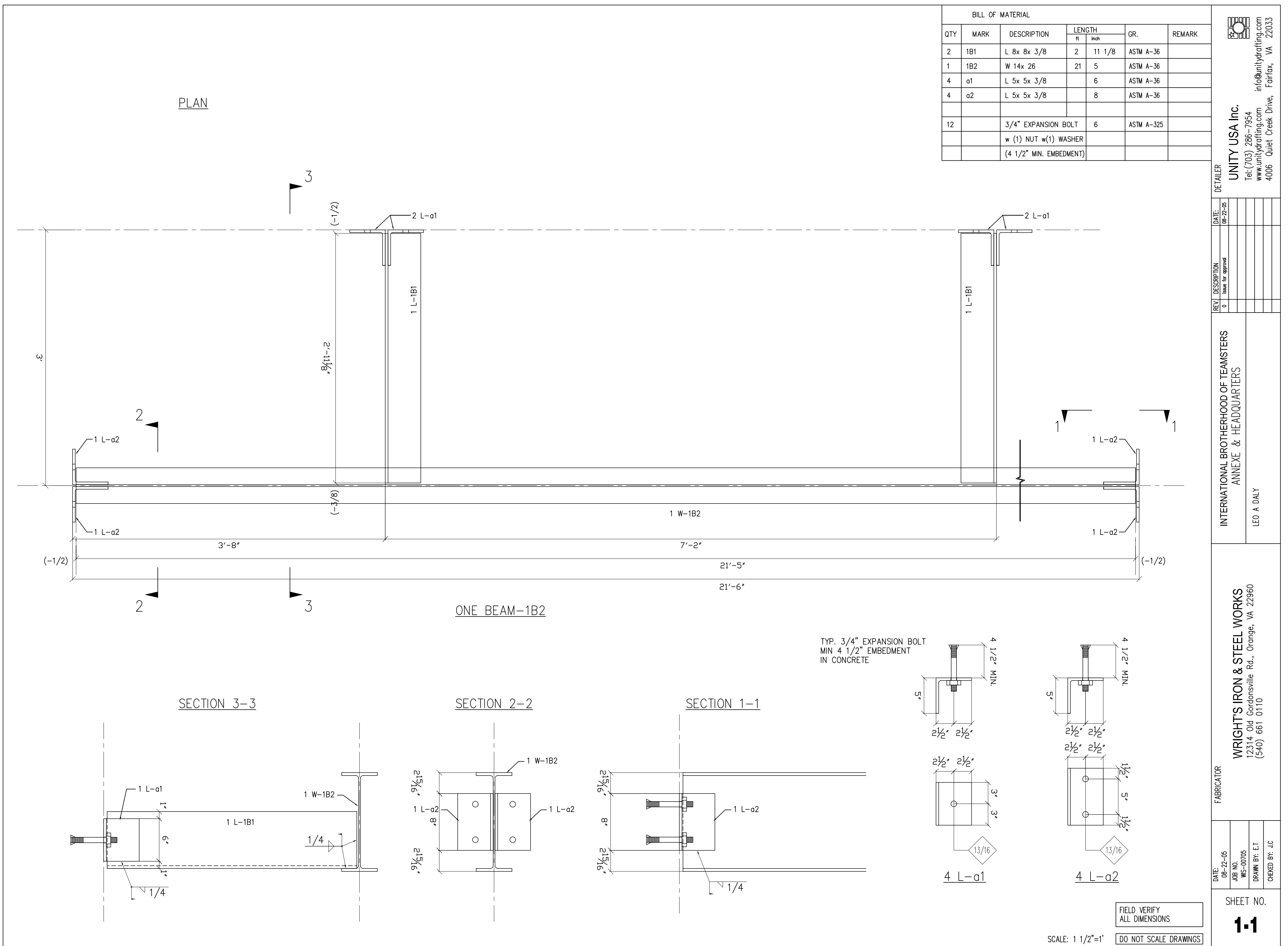
DATE: 08-22-05  
 JOB NO.: 05-0705  
 DRAWN BY: ET  
 CHECKED BY: JC

FABRICATOR: **WRIGHTS IRON & STEEL WORKS**  
 12314 Old Gordonsville Rd., Orange, VA 22960  
 (540) 661 0110

INTERNATIONAL BROTHERHOOD OF TEAMSTERS  
 ANNEXE & HEADQUARTERS  
 LEO A DALY

DETAILER: **UNITY USA Inc.**  
 Tel: (703) 286-7954  
 www.unitydrafting.com  
 info@unitydrafting.com  
 4006 Quiet Creek Drive, Fairfax, VA 22033

SHEET NO. **2-1**



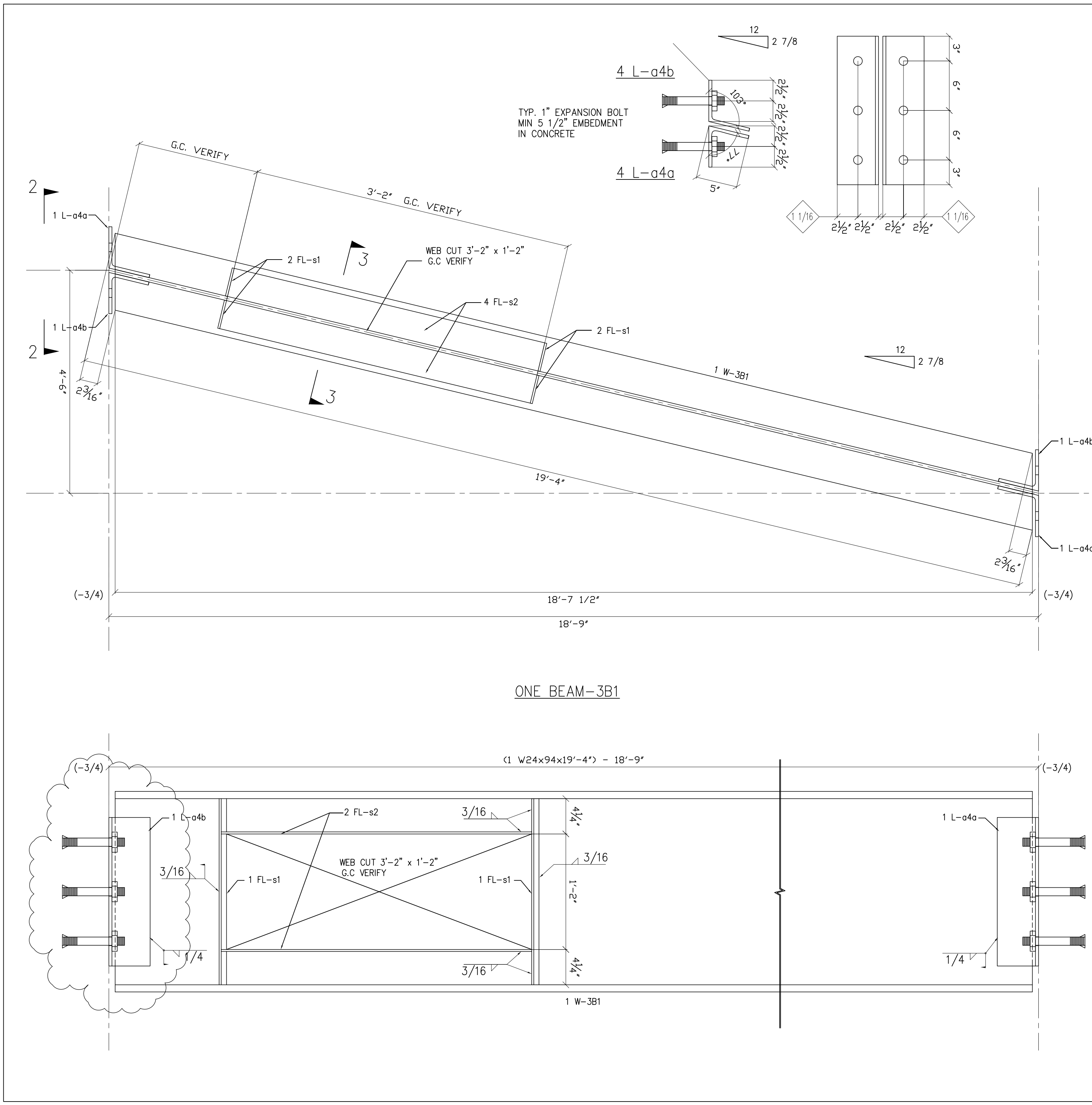
DATE: 08-22-05  
 JOB NO.: 05-0705  
 DRAWN BY: ET  
 CHECKED BY: JC

FABRICATOR: **WRIGHTS IRON & STEEL WORKS**  
 12314 Old Gordonsville Rd., Orange, VA 22960  
 (540) 661 0110

INTERNATIONAL BROTHERHOOD OF TEAMSTERS  
 ANNEXE & HEADQUARTERS  
 LEO A DALY

DETAILER: **UNITY USA Inc.**  
 Tel: (703) 286-7954  
 www.unitydrafting.com  
 info@unitydrafting.com  
 4006 Quiet Creek Drive, Fairfax, VA 22033

SHEET NO. **1-1**



BILL OF MATERIAL						
QTY	MARK	DESCRIPTION	LENGTH ft in	GR.	REMARK	
1	3B1	W 24x 94	24	9 1/8	ASTM A-36	
2	a4a	L 5x 5x 3/8	1	6	ASTM A-36	BENT
2	a4b	L 5x 5x 3/8	1	6	ASTM A-36	BENT
4	s1	FL 1/4x 3 1/2	1	10 9/16	ASTM A-36	
4	s2	FL 1/4x 3 1/2	3	2	ASTM A-36	
12		1" EXPANSION BOLT	6		ASTM A-325	
		w (1) NUT w(1) WASHER				
		(4 1/2" MIN. EMBEDMENT)				

DATE: 08-22-05  
JOB NO.: 08-0705  
DRAWN BY: ET  
CHECKED BY: JC

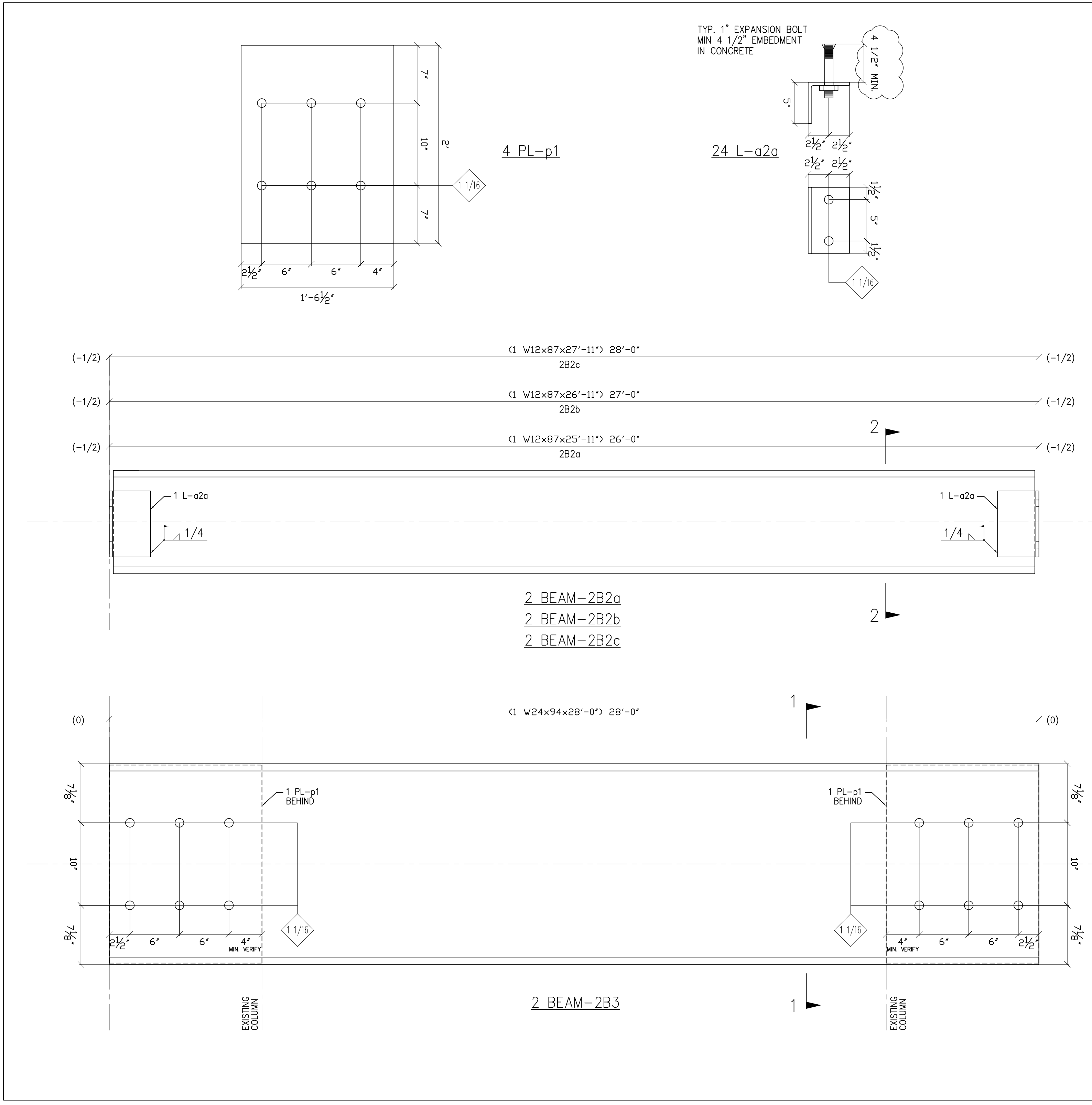
DETAILER: UNITY USA Inc.  
DATE: 08-22-05

REVISION: 0 Issue for approval

FABRICATOR: INTERNATIONAL BROTHERHOOD OF TEAMSTERS  
ANNEXE & HEADQUARTERS  
LEO A DALY

FABRICATOR: WRIGHTS IRON & STEEL WORKS  
12314 Old Gordonsville Rd., Orange, VA 22960  
(540) 661 0110

SHEET NO. **3-1**



BILL OF MATERIAL					
QTY	MARK	DESCRIPTION	LENGTH ft in	GR.	REMARK
2	2B2a	W 12x 87	25	11	ASTM A-36
2	2B2b	W 12x 87	26	11	ASTM A-36
2	2B2c	W 12x 87	27	11	ASTM A-36
24	a2a	L 5x 5x 3/8	8		ASTM A-36
24		1" EXPANSION BOLT	6		ASTM A-325
		w (1) NUT w(1) WASHER			
		(4 1/2" MIN. EMBEDMENT)			
2	2B3	W 24 x 94	28		ASTM A-36
4	p1	PL 1/2x 24	1	6 1/2	ASTM A-36
24		1" EXPANSION BOLT	14		ASTM A-325
		w (1) NUT w(1) WASHER			
		(4 1/2" MIN. EMBEDMENT)			

DATE: 08-22-05  
JOB NO.: 08-0705  
DRAWN BY: ET  
CHECKED BY: JC

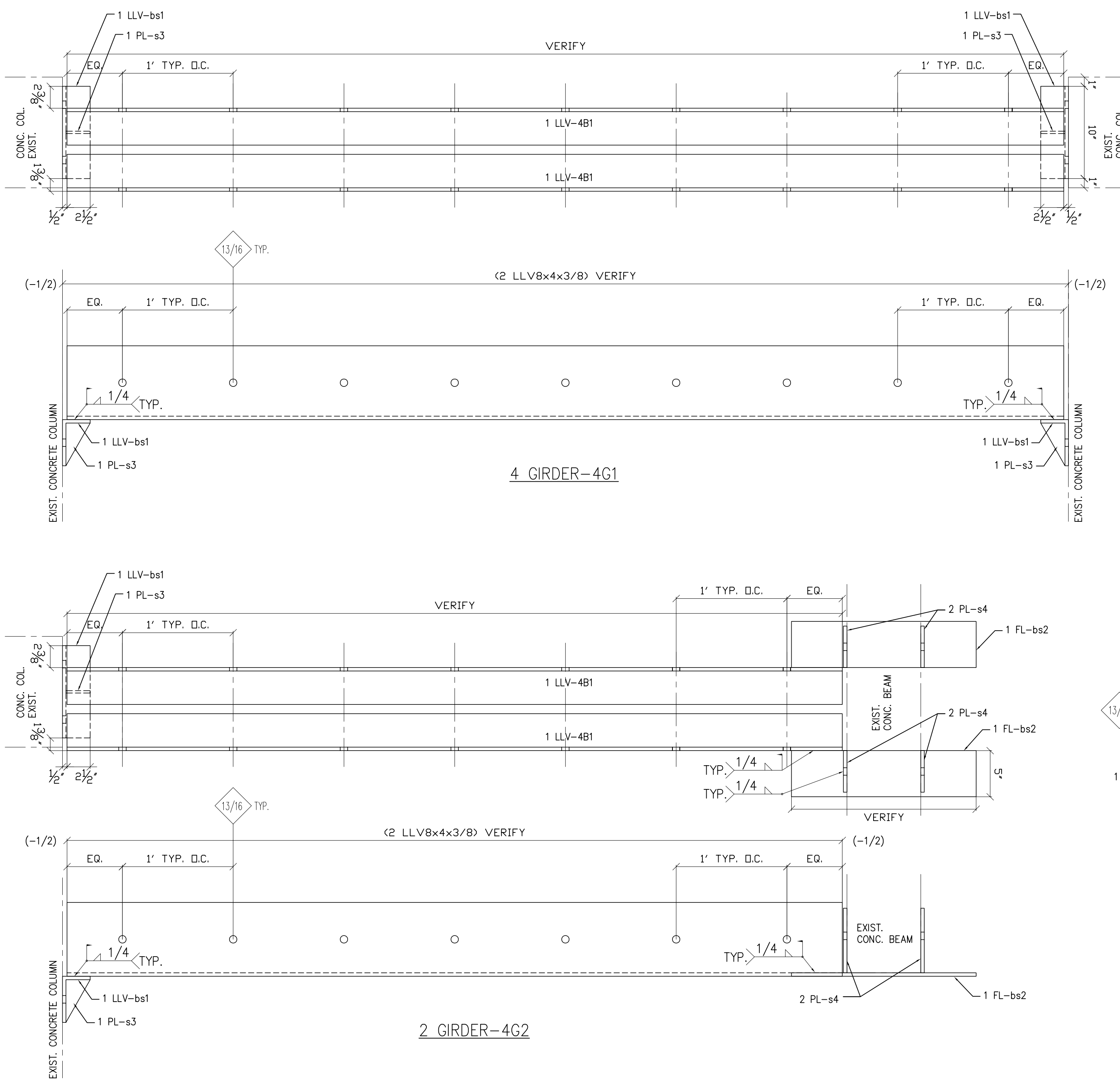
DETAILER: UNITY USA Inc.  
DATE: 08-22-05

REVISION: 0 Issue for approval

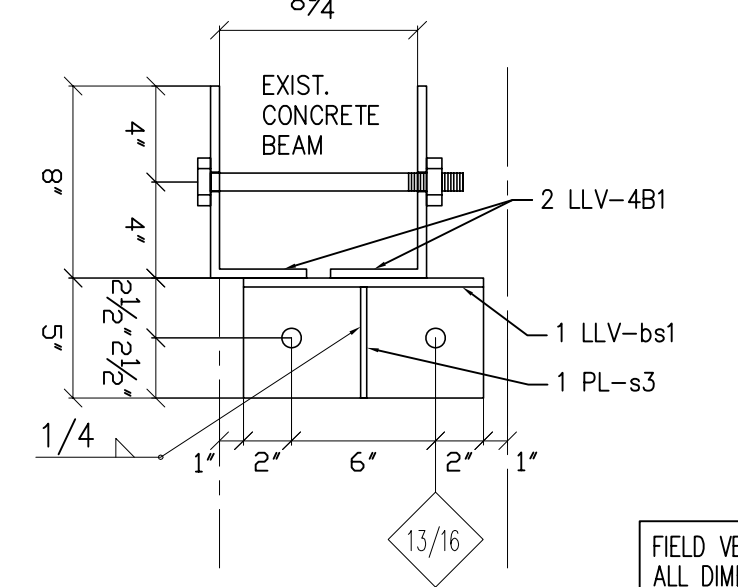
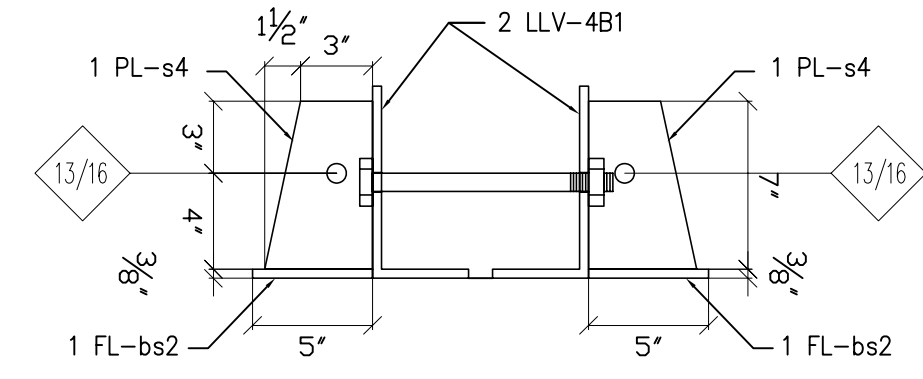
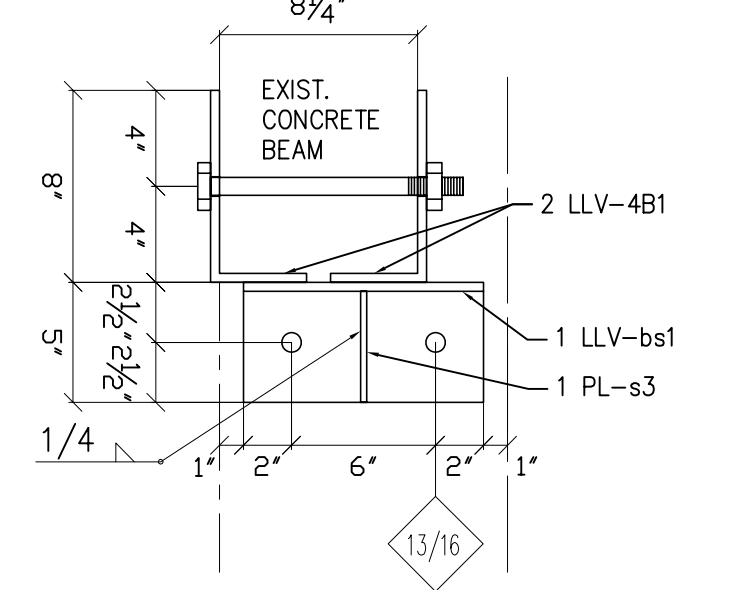
FABRICATOR: INTERNATIONAL BROTHERHOOD OF TEAMSTERS  
ANNEXE & HEADQUARTERS  
LEO A DALY

FABRICATOR: WRIGHTS IRON & STEEL WORKS  
12314 Old Gordonsville Rd., Orange, VA 22960  
(540) 661 0110

SHEET NO. **2-2**



BILL OF MATERIAL					
QTY	MARK	DESCRIPTION	LENGTH ft in	GR.	REMARK
4	4G1				
8	4B1	LLV 8x 4x 3/8		VERIFY	ASTM A-36
8	bs1	LLV 5x 3x 3/8	10		ASTM A-36
8	s3	PL 2 5/8 x 1/4"	4 5/8		ASTM A-36
2	4G2				
4	4B1	LLV 8x 4x 3/8		VERIFY	ASTM A-36
4	bs1	LLV 5x 3x 3/8	10		ASTM A-36
4	s3	PL 2 5/8 x 1/4"	4 5/8		ASTM A-36
2	bs2	FL 3/8x 5		VERIFY	ASTM A-36
4	s4	PL 3/8x 4 1/2	7		ASTM A-36
VF.		3/4" THRU BOLT	10		ASTM A-325
		w (1) NUT w(1) WASHER			
20		3/4" EXPANSION BOLT	6		ASTM A-325
		w (1) NUT w(1) WASHER			
		(4 1/2" MIN. EMBEDMENT)			



SCALE: 1 1/2"=1' DO NOT SCALE DRAWINGS

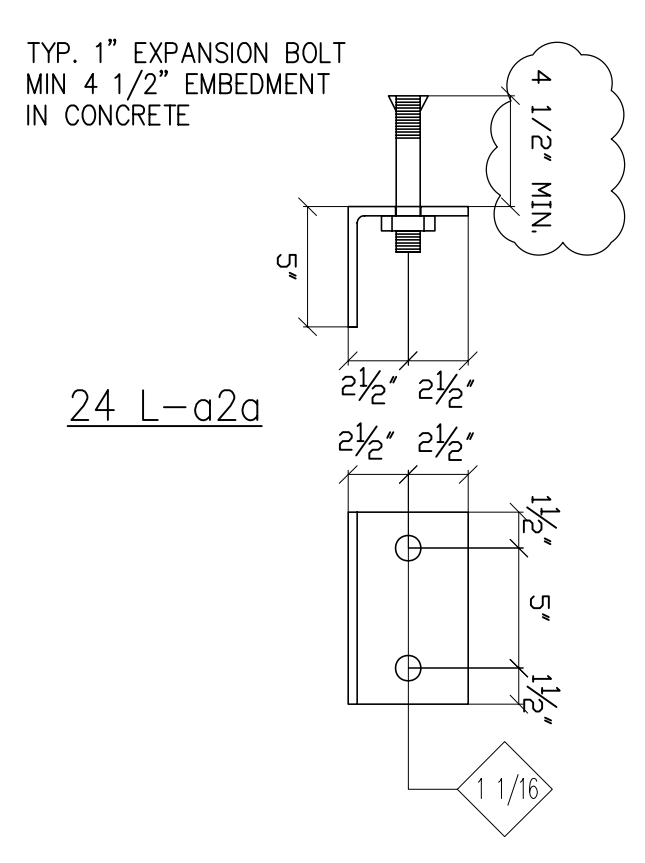
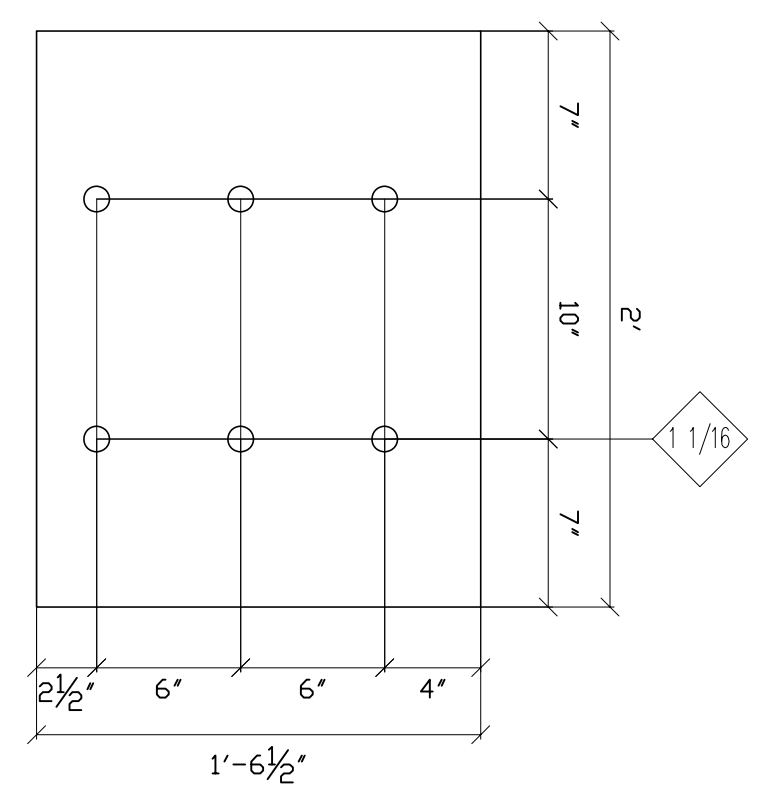
DATE: 08-22-05  
 JOB NO.: 08-0705  
 DRAWN BY: LEO A DALY  
 CHECKED BY: J.C.

DETAILER: UNITY USA Inc.  
 Tel: (703) 286-7954  
 www.unitydrafting.com  
 info@unitydrafting.com  
 4006 Quiet Creek Drive, Fairfax, VA 22033

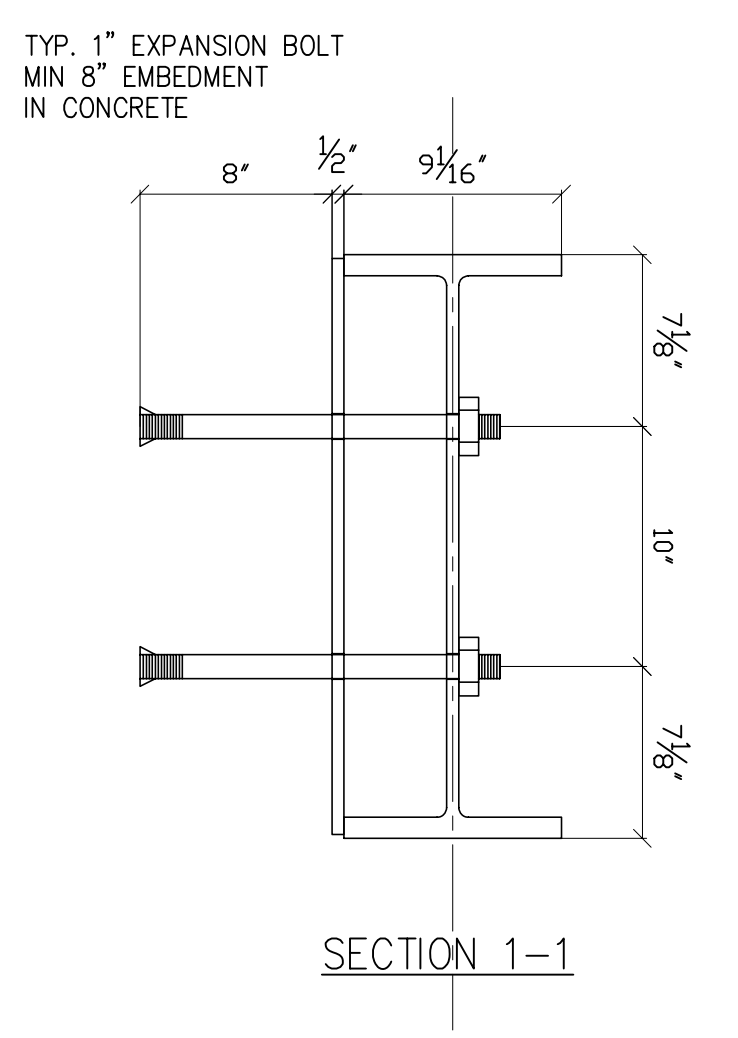
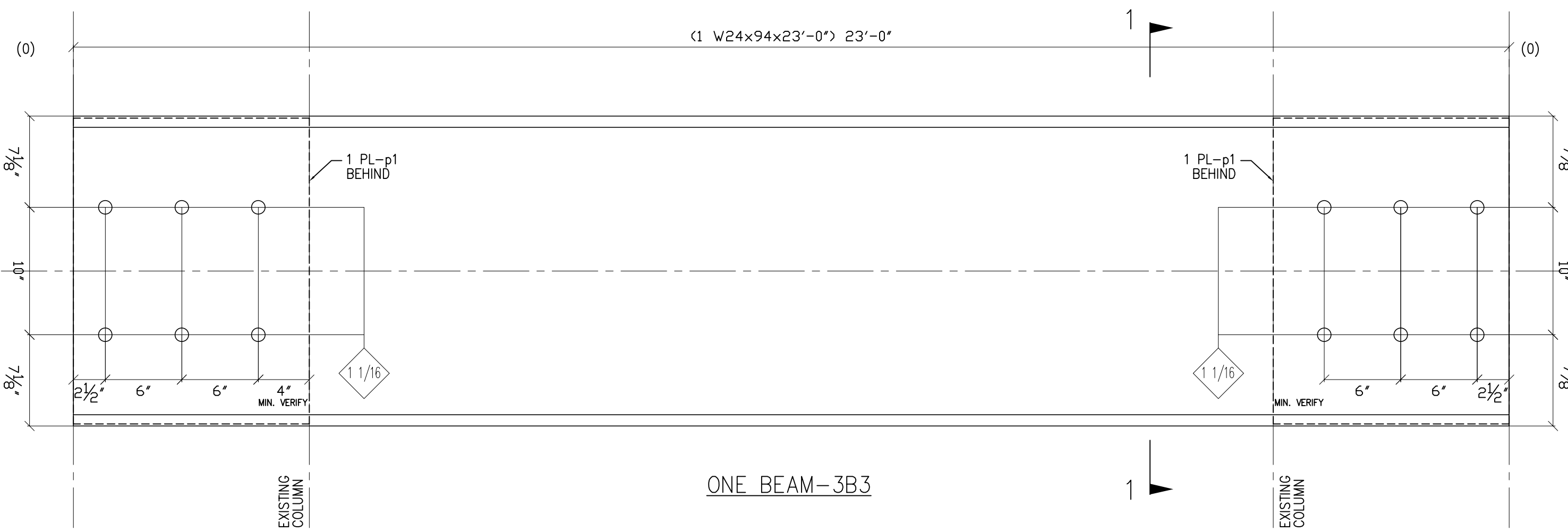
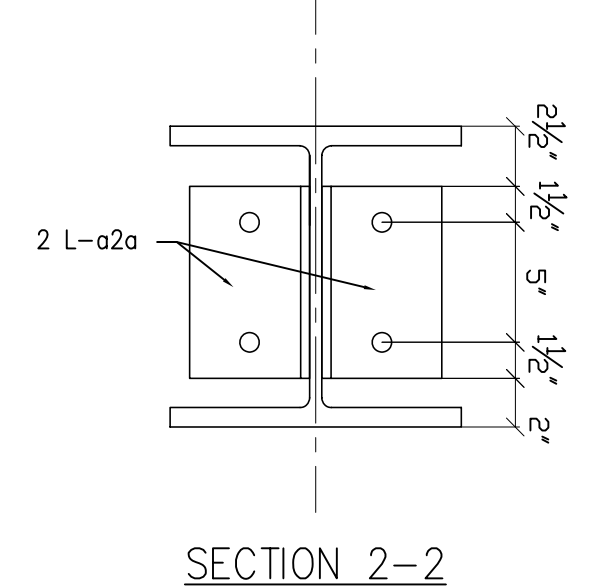
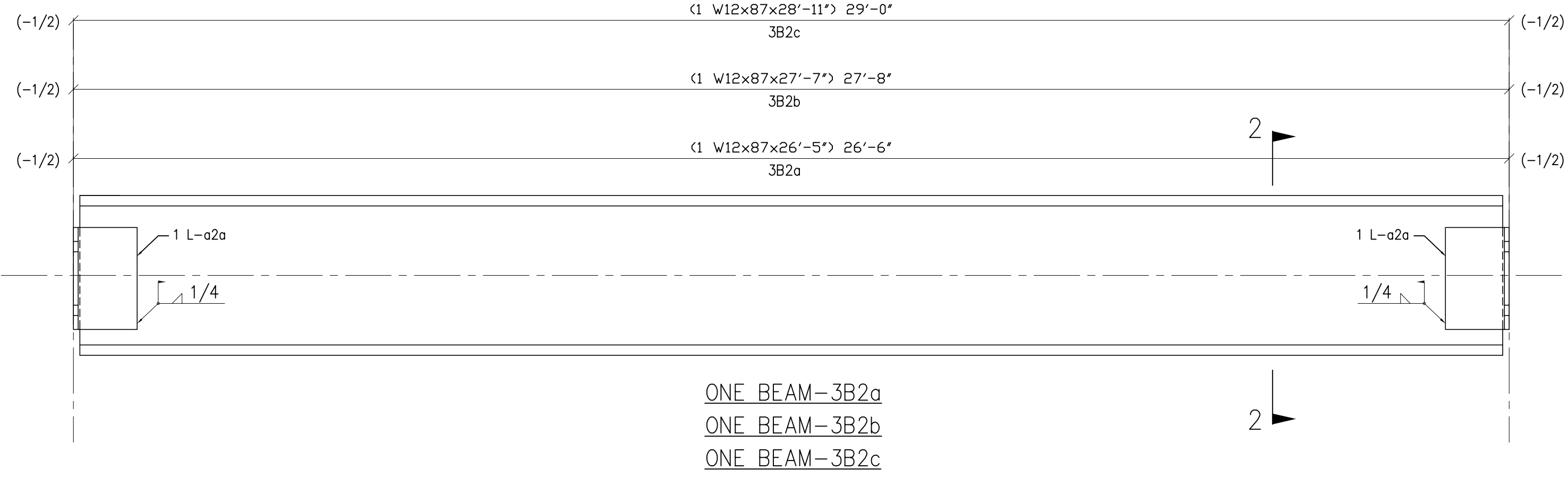
INTERNATIONAL BROTHERHOOD OF TEAMSTERS  
 ANNEKE & HEADQUARTERS  
 LEO A DALY

FABRICATOR: WRIGHTS IRON & STEEL WORKS  
 12314 Old Gordonsville Rd., Orange, VA 22960  
 (540) 661 0110

SHEET NO. **4-1**



BILL OF MATERIAL					
QTY	MARK	DESCRIPTION	LENGTH ft in	GR.	REMARK
1	3B2a	W 12x 87	26 5		ASTM A-36
1	3B2b	W 12x 87	27 7		ASTM A-36
1	3B2c	W 12x 87	28 11		ASTM A-36
12	a2a	L 5x 5x 3/8	8		ASTM A-36
12		1" EXPANSION BOLT	6		ASTM A-325
		w (1) NUT w(1) WASHER			
		(4 1/2" MIN. EMBEDMENT)			
1	3B3	W 24 x 94	23		ASTM A-36
2	p1	PL 1/2x 24	1 6 1/2		ASTM A-36
12		1" EXPANSION BOLT	14		ASTM A-325
		w (1) NUT w(1) WASHER			
		(4 1/2" MIN. EMBEDMENT)			



SCALE: 1 1/2"=1' DO NOT SCALE DRAWINGS

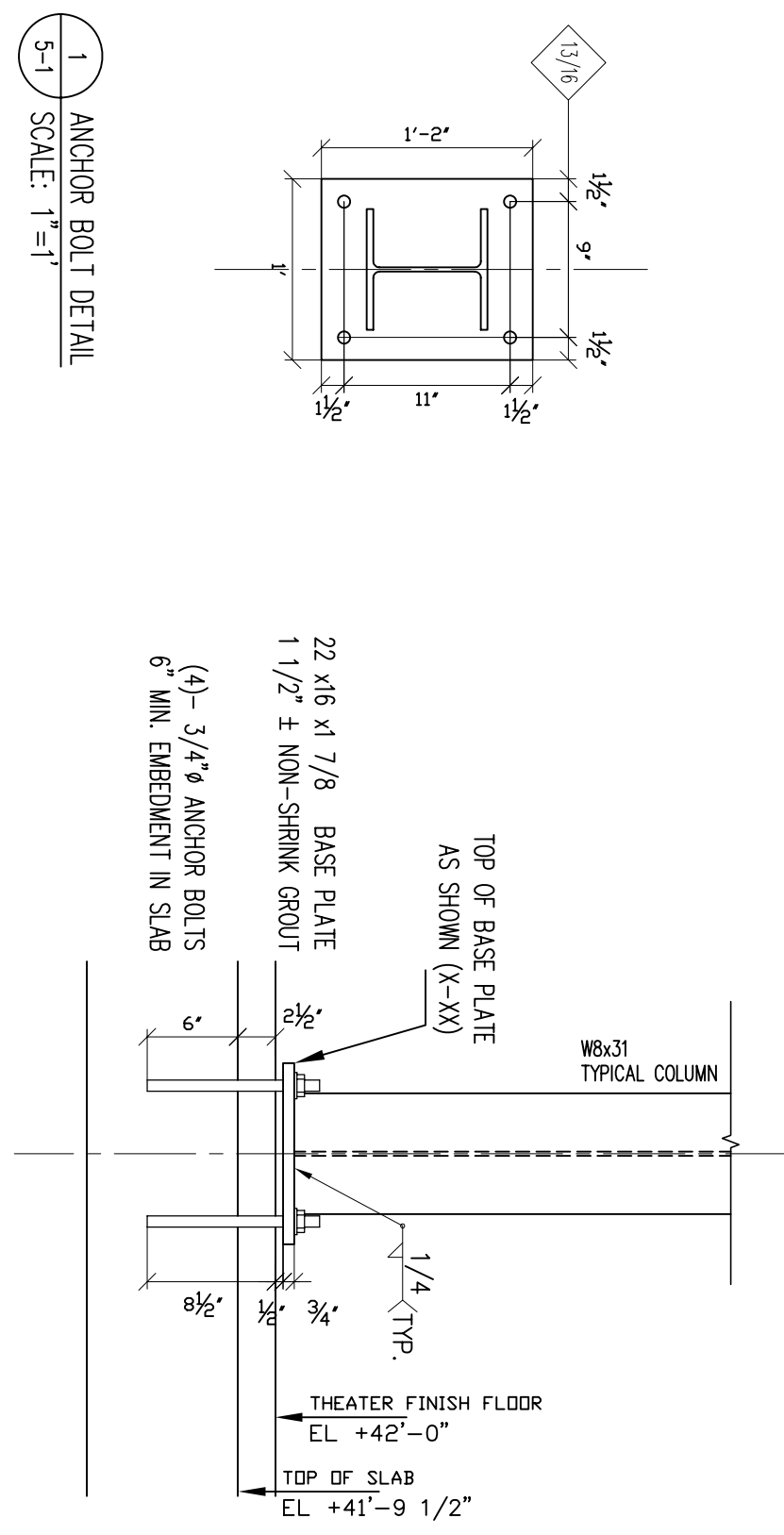
DATE: 08-22-05  
 JOB NO.: 08-0705  
 DRAWN BY: LEO A DALY  
 CHECKED BY: J.C.

DETAILER: UNITY USA Inc.  
 Tel: (703) 286-7954  
 www.unitydrafting.com  
 info@unitydrafting.com  
 4006 Quiet Creek Drive, Fairfax, VA 22033

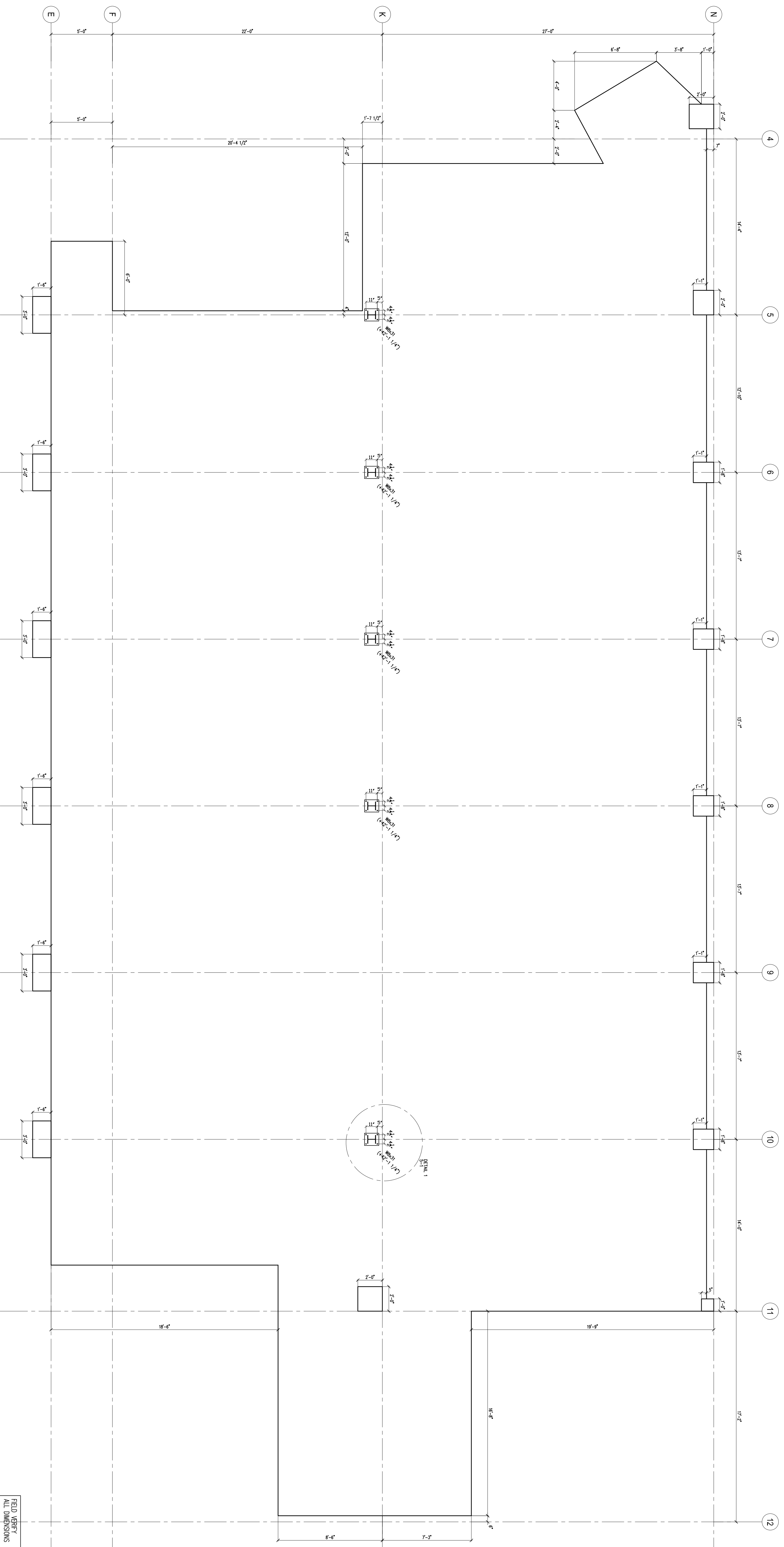
INTERNATIONAL BROTHERHOOD OF TEAMSTERS  
 ANNEKE & HEADQUARTERS  
 LEO A DALY

FABRICATOR: WRIGHTS IRON & STEEL WORKS  
 12314 Old Gordonsville Rd., Orange, VA 22960  
 (540) 661 0110

SHEET NO. **3-2**



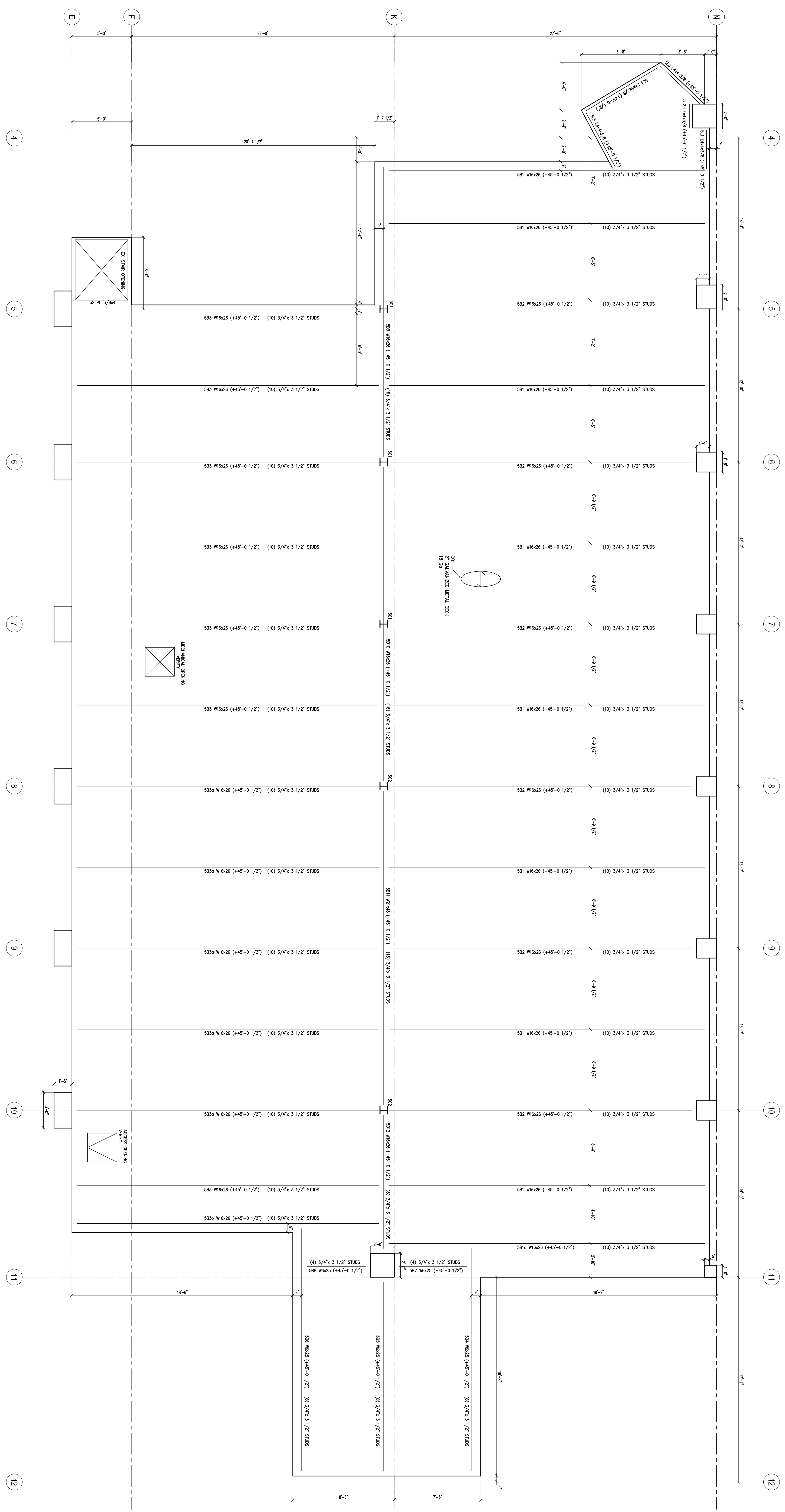
ANCHOR BOLT LAYOUT  
SCALE: 1/4"=1'



FIELD VERIFY ALL DIMENSIONS  
DO NOT SCALE DRAWINGS

SHEET NO. <b>E 5-1</b>	DATE: 08-22-05	FABRICATOR <b>WRIGHT'S IRON &amp; STEEL WORKS</b> 12314 Old Gordonsville Rd., Orange, VA 22960 (540) 661 0110	PROJECT INTERNATIONAL BROTHERHOOD OF TEAMSTERS ANNEXE & HEADQUARTERS	REV. DESCRIPTION 0 Issue for approval	DATE: 08-22-05	DETAILER <b>UNITY USA Inc.</b> Tel: (703) 286-7954 www.unitydrafting.com info@unitydrafting.com 4006 Quiet Creek Drive, Fairfax, VA 22033
	JOB NO. WS-00705		DRAWN BY: E.T. CHECKED BY: J.C.	LEO A DALY	(Empty)	

FIRST FLOOR SLAB IN-FILL FRAMING PLAN  
SCALE: 1/4"=1'

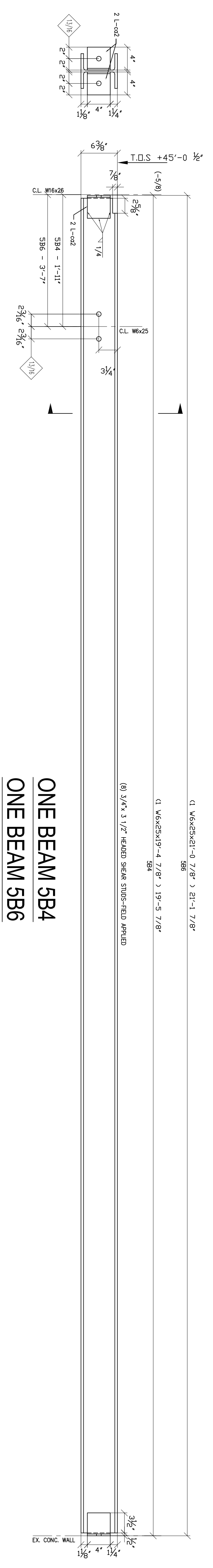


SCALE: 1/4"=1'

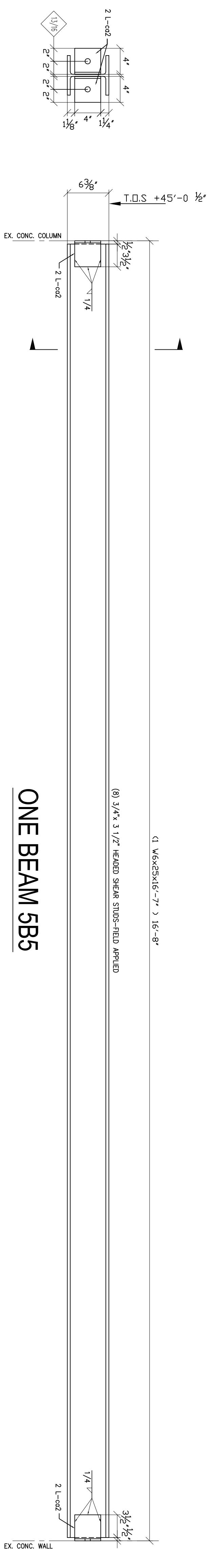
FIELD VERIFY ALL DIMENSIONS  
DO NOT SCALE DRAWINGS

<b>E-5-2</b> SHEET NO.	DATE: 08-22-05	FABRICATOR  <b>WRIGHT'S IRON &amp; STEEL WORKS</b> 12314 Old Gordonsville Rd., Orange, VA 22960 (540) 661 0110	PROJECT	REV. 0	DESCRIPTION	DATE: 08-22-05	DETAILER
	JOB NO. WS-00705		INTERNATIONAL BROTHERHOOD OF TEAMSTERS	Issue for approval		UNITY USA Inc. Tel: (703) 286-7954 www.unitydrafting.com info@unitydrafting.com 4006 Quiet Creek Drive, Fairfax, VA 22033	
	DRAWN BY: E.T		ANNEXE & HEADQUARTERS				
	CHECKED BY: J.C		LEO A DALY				

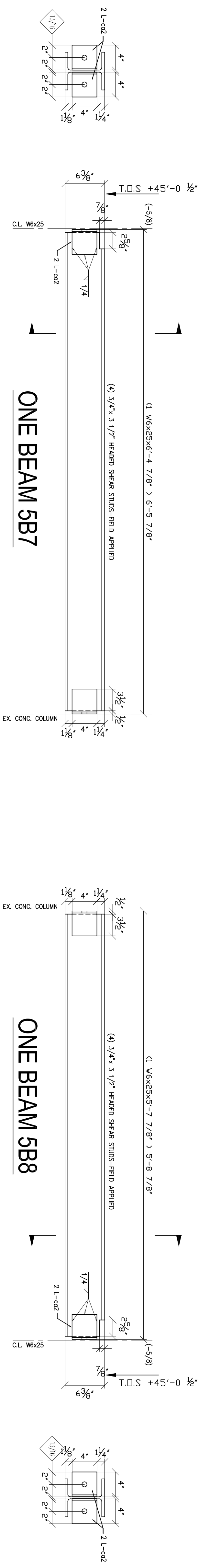




**ONE BEAM 5B4**  
**ONE BEAM 5B6**

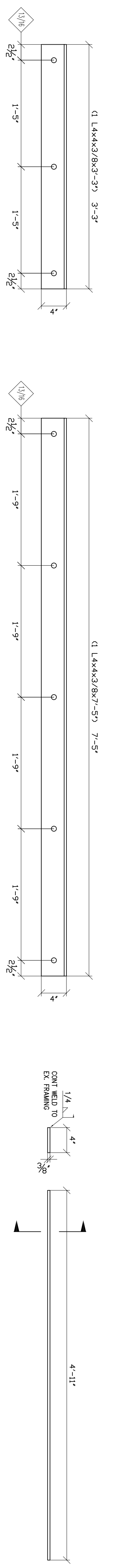


**ONE BEAM 5B5**



**ONE BEAM 5B7**

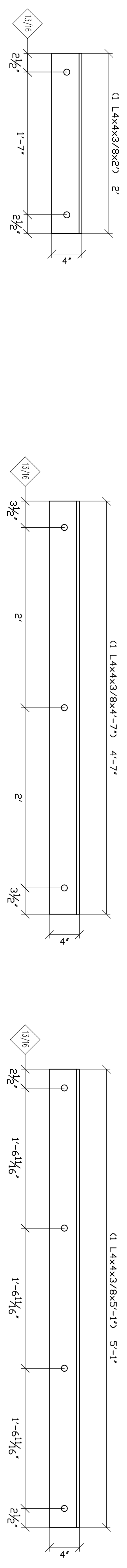
**ONE BEAM 5B8**



**ONE 5L1**

**ONE 5L4**

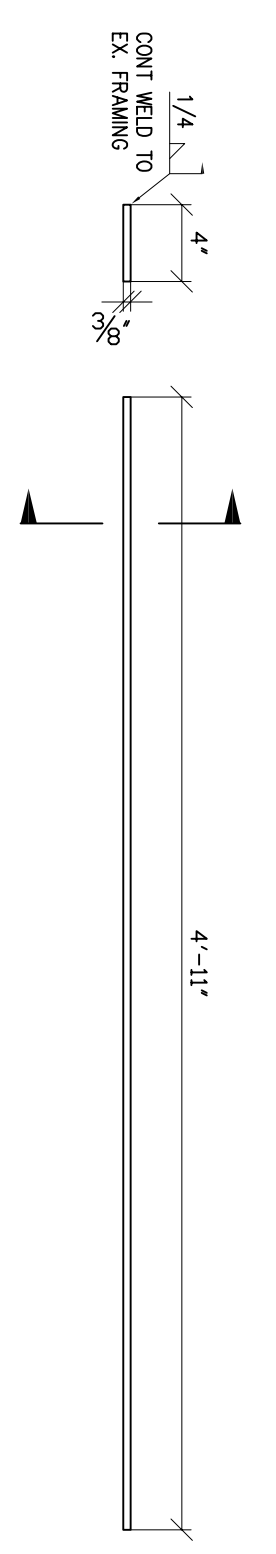
**ONE 5L2**



**ONE 5L2**

**ONE 5L3**

**ONE 5L5**



**ONE 5L2**

BILL OF MATERIAL					
QTY	MARK	DESCRIPTION	LENGTH	GR.	REMARK
1	BEAM	W 6x 25	19	4 7/8	ASTM A-36 STUDS AS 900MM
4	c02	L 4x 4x 5/16	4		ASTM A-36
1	BEAM	W 6x 25	16	7	ASTM A-36 STUDS AS 900MM
4	c02	L 4x 4x 5/16	4		ASTM A-36
1	BEAM	W 6x 25	21	0 7/8	ASTM A-36 STUDS AS 900MM
4	c02	L 4x 4x 5/16	4		ASTM A-36
1	BEAM	W 6x 25	6	4 7/8	ASTM A-36 STUDS AS 900MM
4	c02	L 4x 4x 5/16	4		ASTM A-36
1	BEAM	W 6x 25	5	7 7/8	ASTM A-36 STUDS AS 900MM
4	c02	L 4x 4x 5/16	4		ASTM A-36
1	SL1	L 4x 4x 3/8	3	3	ASTM A-36
1	SL2	L 4x 4x 3/8	2		ASTM A-36
1	SL3	L 4x 4x 3/8	4	7	ASTM A-36
1	SL4	L 4x 4x 3/8	7	5	ASTM A-36
1	SL5	L 4x 4x 3/8	5	1	ASTM A-36
1	Q2	PL 3/8x 4	4	11	ASTM A-36

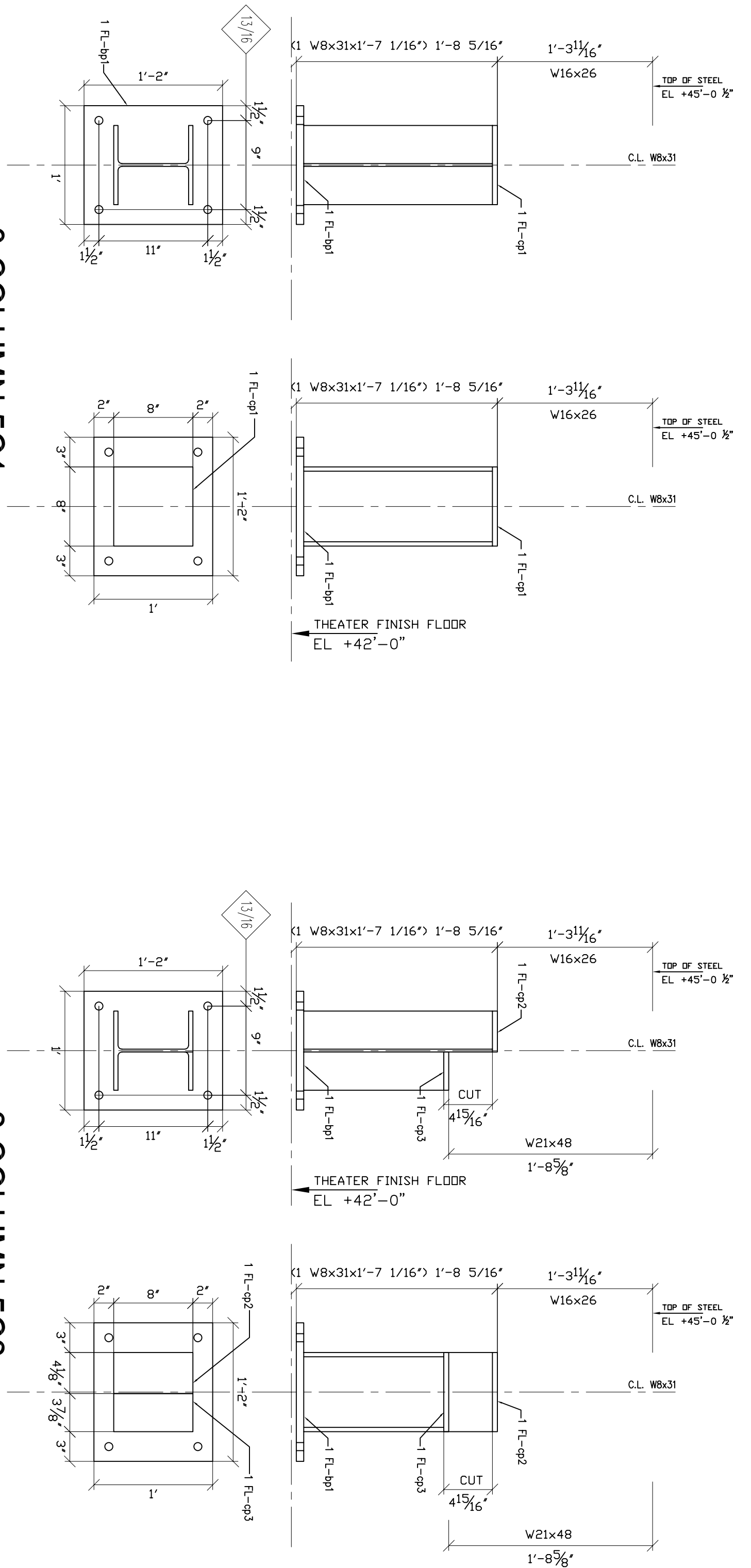
DETAILER  
**UNITY USA Inc.**  
Tel: (703) 286-7954  
www.unitydrafting.com info@unitydrafting.com  
4006 Quiet Creek Drive, Fairfax, VA 22033

PROJECT  
**INTERNATIONAL BROTHERHOOD OF TEAMSTERS  
ANNEXE & HEADQUARTERS**  
LEO A DALY

FABRICATOR  
**WRIGHT'S IRON & STEEL WORKS**  
12314 Old Gordonsville Rd., Orange, VA 22960  
(540) 661 0110

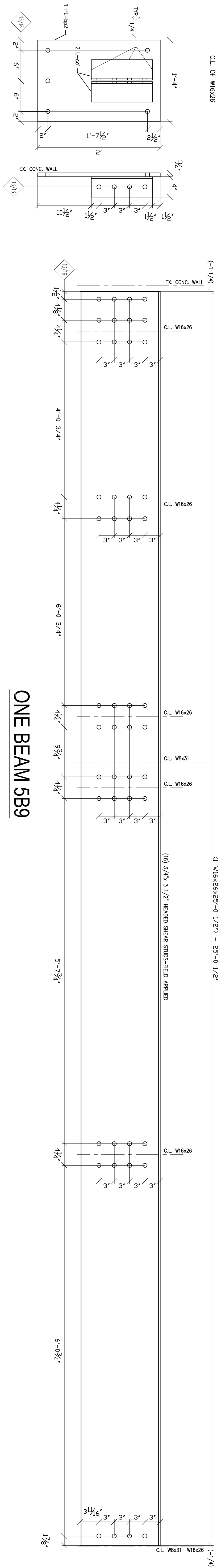
DATE: 08-22-05  
JOB NO. WS-00705  
DRAWN BY: E.T  
CHECKED BY: J.C  
SHEET NO. **5-4**

FIELD VERIFY ALL DIMENSIONS  
DO NOT SCALE DRAWINGS



**3 COLUMN 5C1**

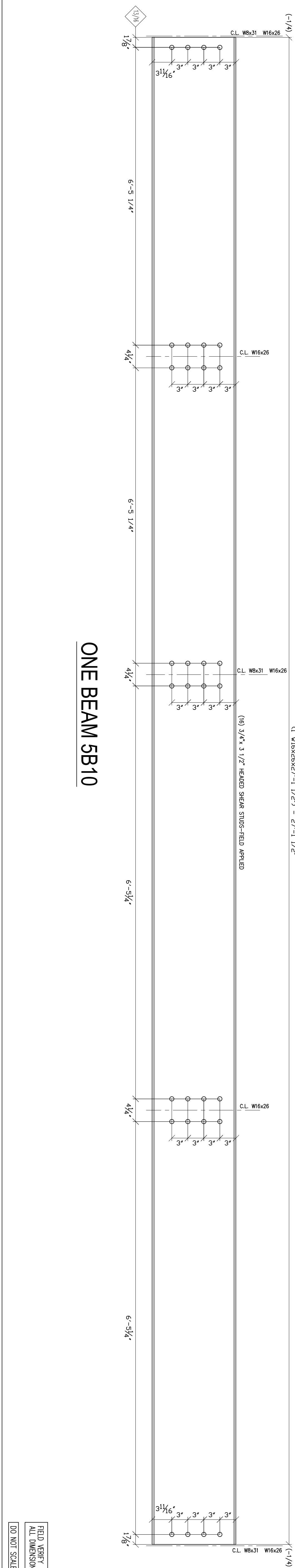
**2 COLUMN 5C2**



**ONE BEAM 5B9**

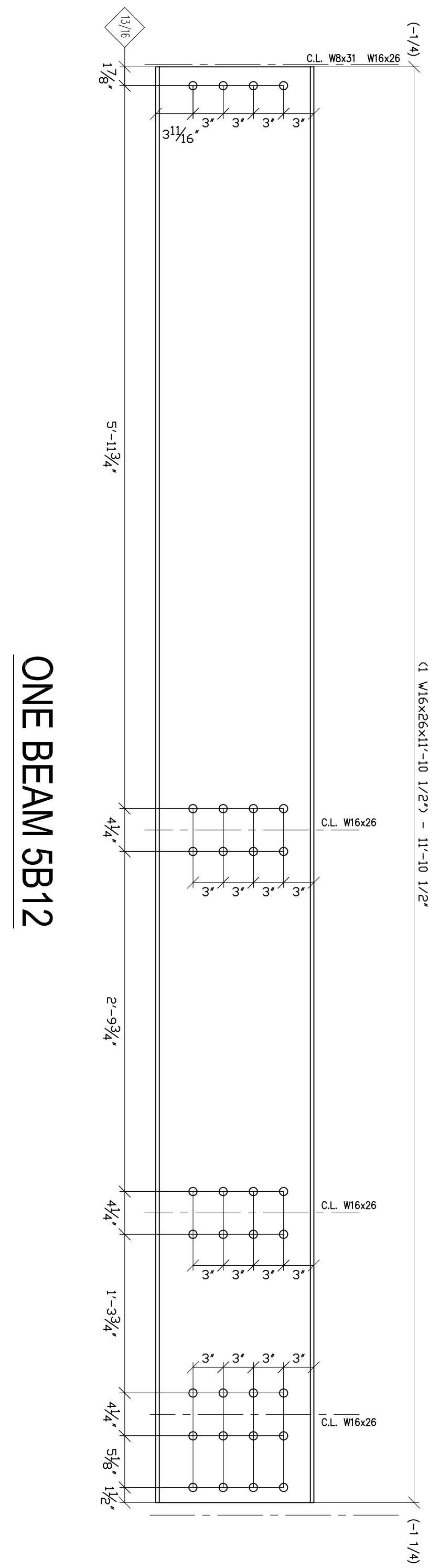
**ONE BEAM 5B10**

BILL OF MATERIAL					
QTY	MARK	DESCRIPTION	LENGTH	GR.	REMARK
3	COLU	W 8x 31	1	7 1/16	ASTM A-36
3	COLU	FL 3/4x 12	1	2	ASTM A-36
3	COLU	FL 1/2x 8	8		ASTM A-36
2	COLU	W 8x 31	1	7 1/16	ASTM A-36
2	COLU	FL 3/4x 12	1	2	ASTM A-36
2	COLU	FL 1/2x 8	4 1/8		ASTM A-36
2	COLU	FL 1/2x 8	3 7/8		ASTM A-36
1	BEAM	W 16x 26	25	0 1/2	ASTM A-36
1	BEAM	L 4x 4x 3/8	1		ASTM A-36
1	BEAM	FL 3/4x 16	2		ASTM A-36
1	BEAM	W 16x 26	27	1 1/2	ASTM A-36
1	BEAM	W 16x 26	27	1 1/2	ASTM A-36

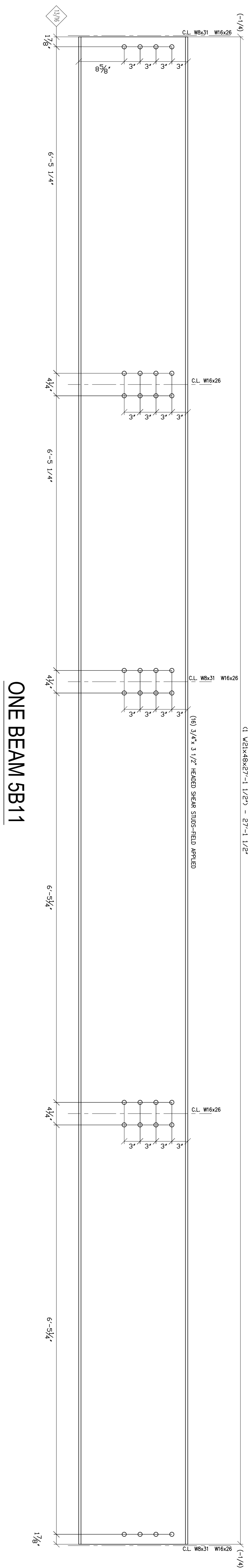
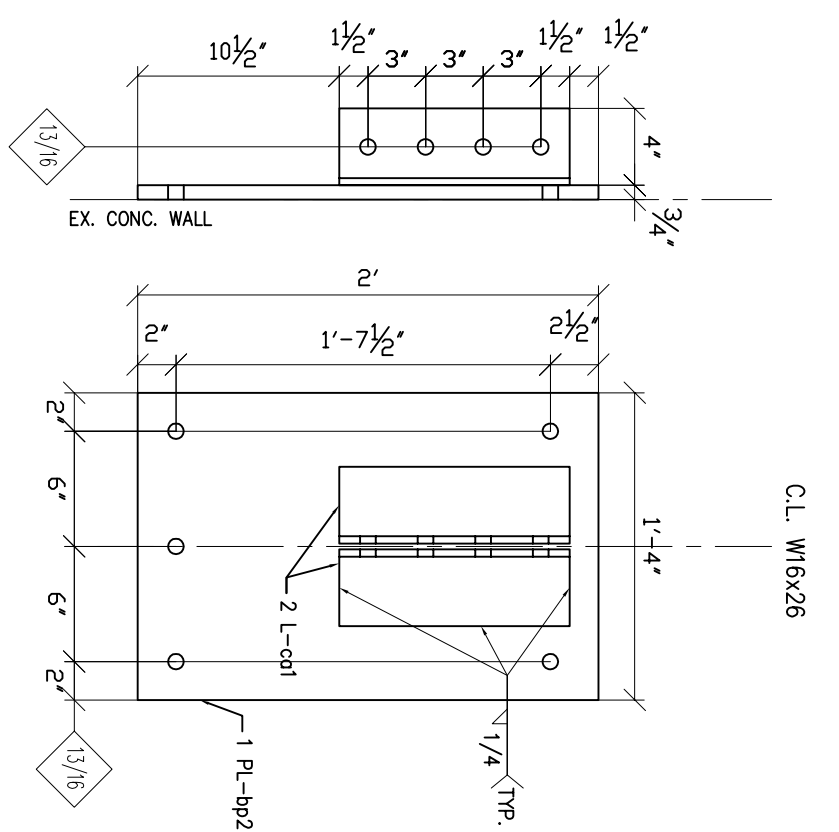


<p><b>5-5</b></p> <p>SHEET NO.</p>	<p>DATE: 08-22-05</p> <p>JOB NO. WS-00705</p> <p>DRAWN BY: E.T</p> <p>CHEKED BY: J.C</p>	<p>FABRICATOR</p> <p><b>WRIGHT'S IRON &amp; STEEL WORKS</b></p> <p>12314 Old Gordonsville Rd., Orange, VA 22960</p> <p>(540) 661 0110</p>	<p>PROJECT</p> <p><b>INTERNATIONAL BROTHERHOOD OF TEAMSTERS</b></p> <p>ANNEXE &amp; HEADQUARTERS</p> <p>LEO A DALY</p>	<p>REV. 0</p> <p>DESCRIPTION Issue for approval</p>	<p>DATE: 08-22-05</p>	<p>DETAILER</p> <p><b>UNITY USA Inc.</b></p> <p>Tel: (703) 286-7954</p> <p>www.unitydrafting.com info@unitydrafting.com</p> <p>4006 Quiet Creek Drive, Fairfax, VA 22033</p>
------------------------------------	--	---	--	---	-----------------------	--

FIELD VERIFY ALL DIMENSIONS  
DO NOT SCALE DRAWINGS



ONE BEAM 5B12



ONE BEAM 5B11

BILL OF MATERIAL					
QTY	MARK	DESCRIPTION	LENGTH ft	GR.	REMARK
1	BEAM	W 21x 43	27	1 1/2	ASTM A-36 STUDS AS SHOWN
1	BEAM	W 16x 26	11	10 1/2	ASTM A-36 STUDS AS SHOWN
2	coil	L 4x 4x 3/8	1		ASTM A-36
1	bp2	PL 3/4x 16	2		ASTM A-36
1	DECK	2" GALVANIZED			VENTY
	COI	18 GA METAL DECK			

REV.	DESCRIPTION	DATE:
0	Issue for approval	08-22-05

DETAILER  
**UNITY USA Inc.**  
 Tel: (703) 286-7954  
 www.unitydrafting.com info@unitydrafting.com  
 4006 Quiet Creek Drive, Fairfax, VA 22033



PROJECT  
 INTERNATIONAL BROTHERHOOD OF TEAMSTERS  
 ANNEXE & HEADQUARTERS  
 LEO A DALY

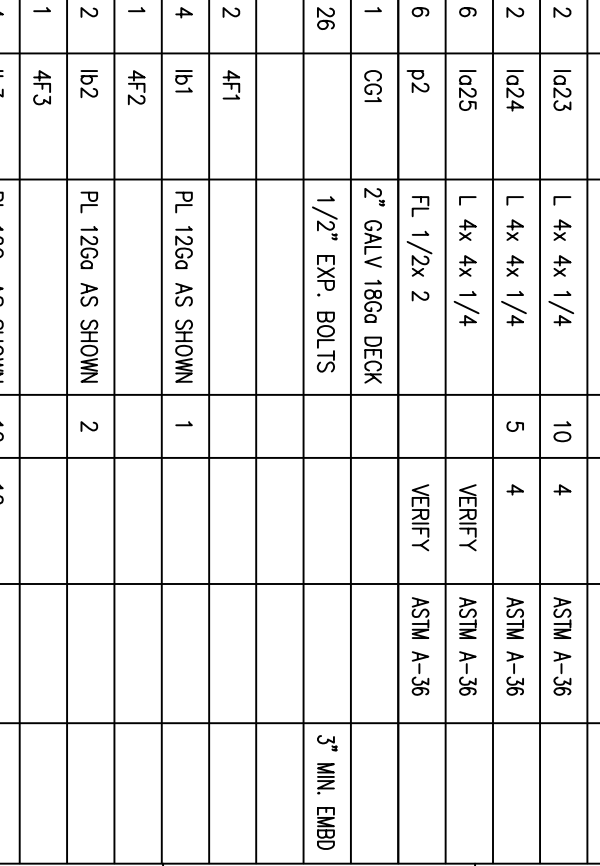
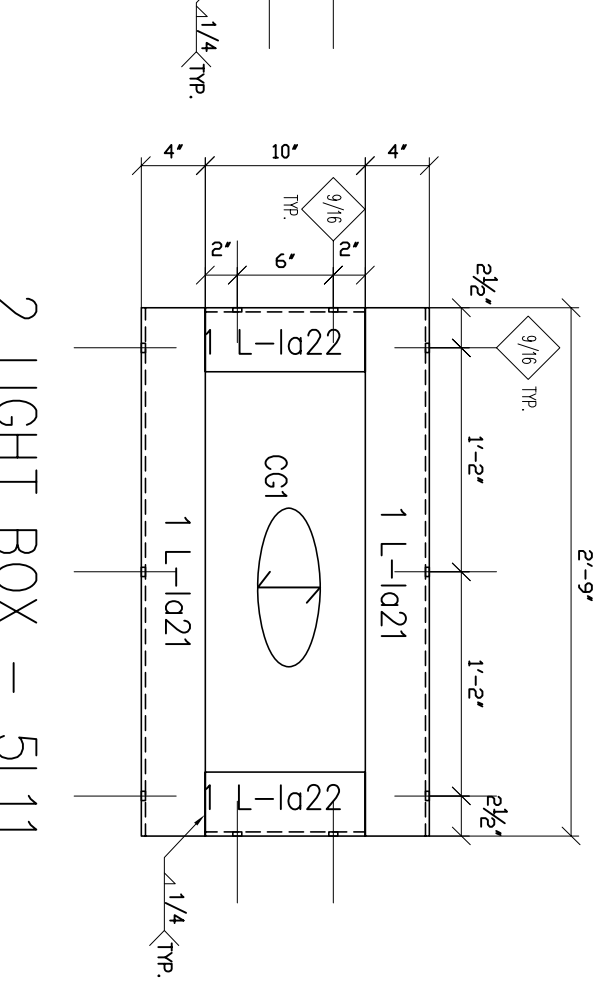
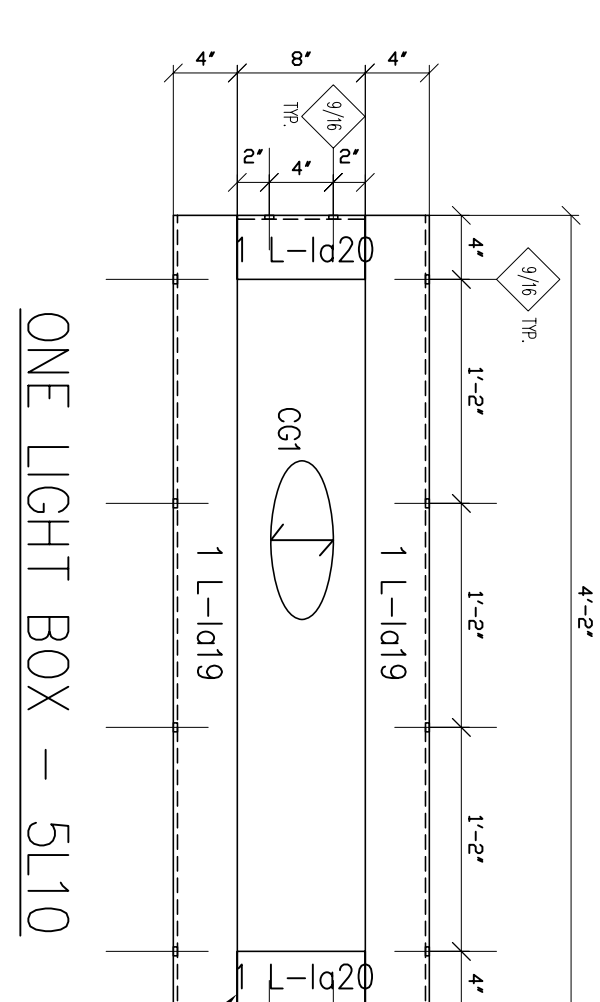
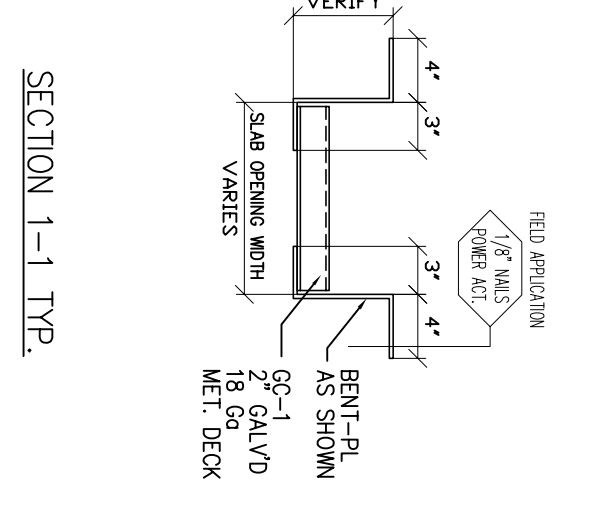
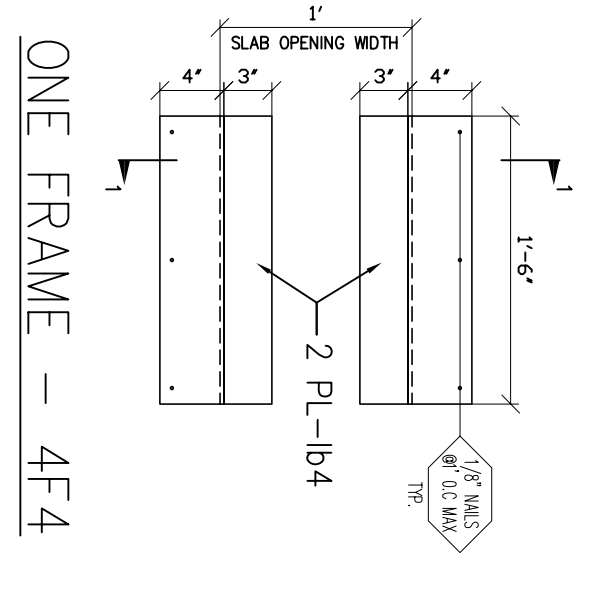
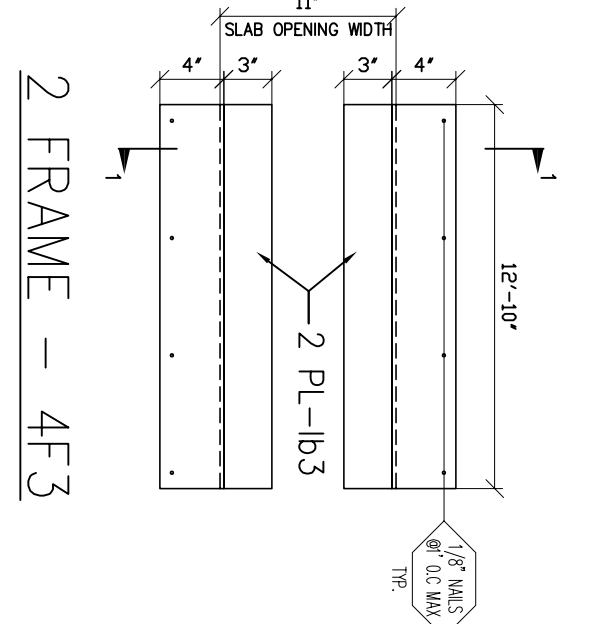
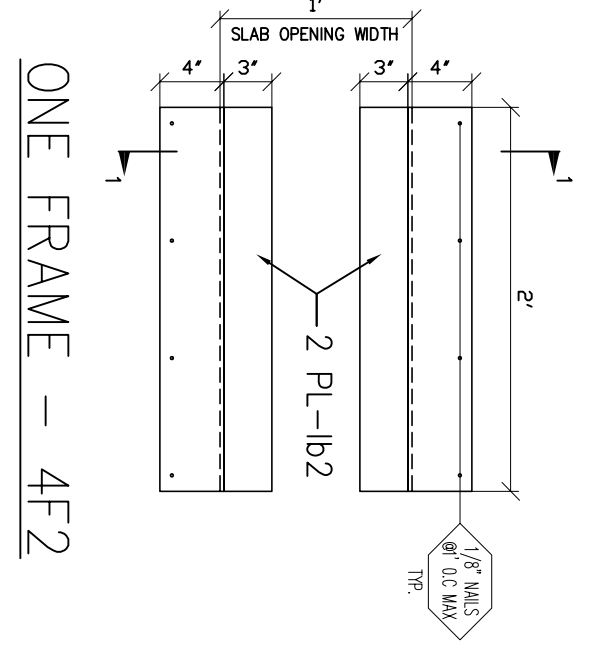
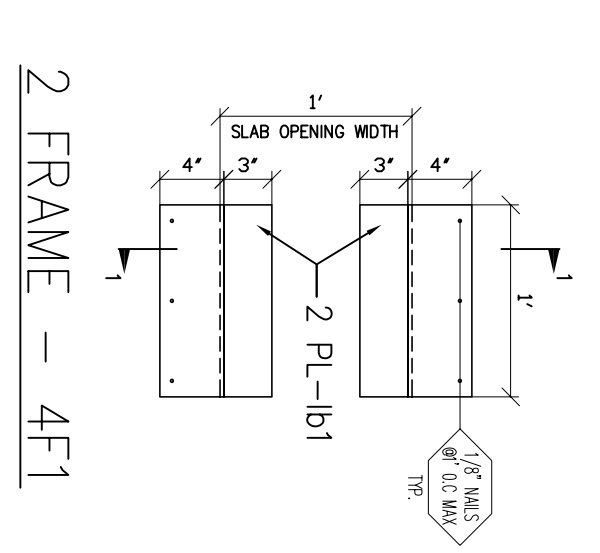
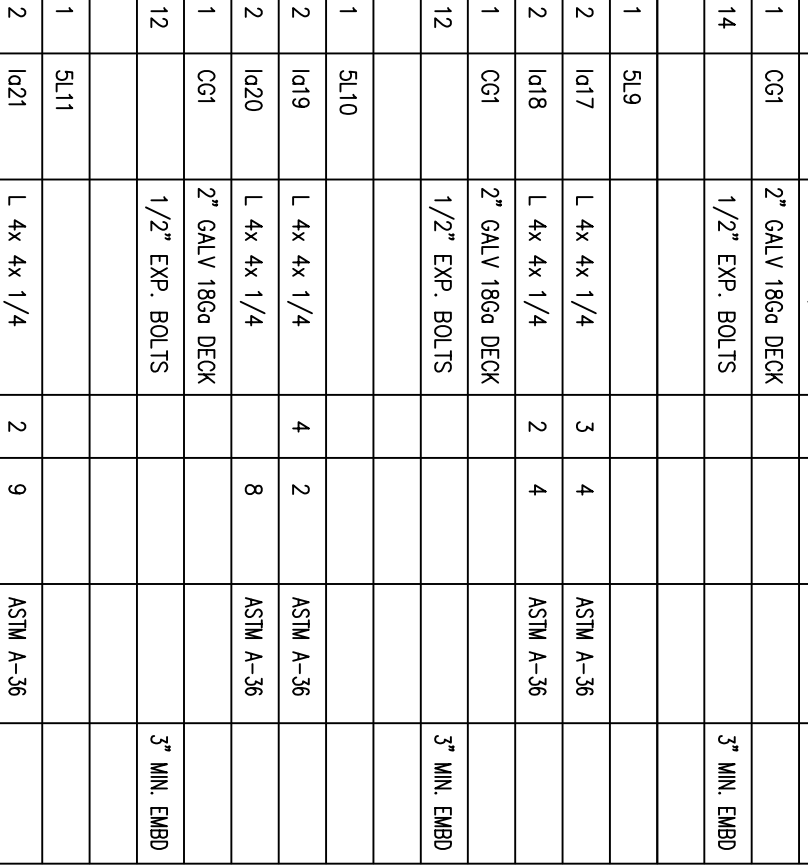
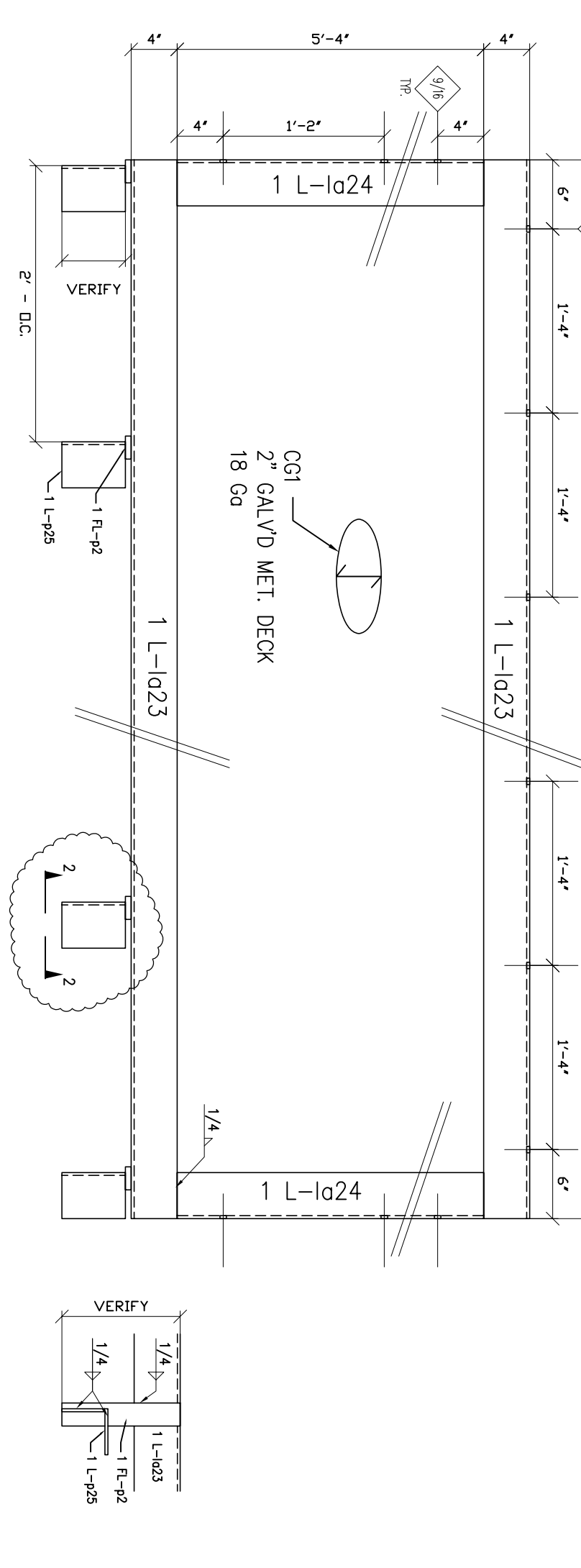
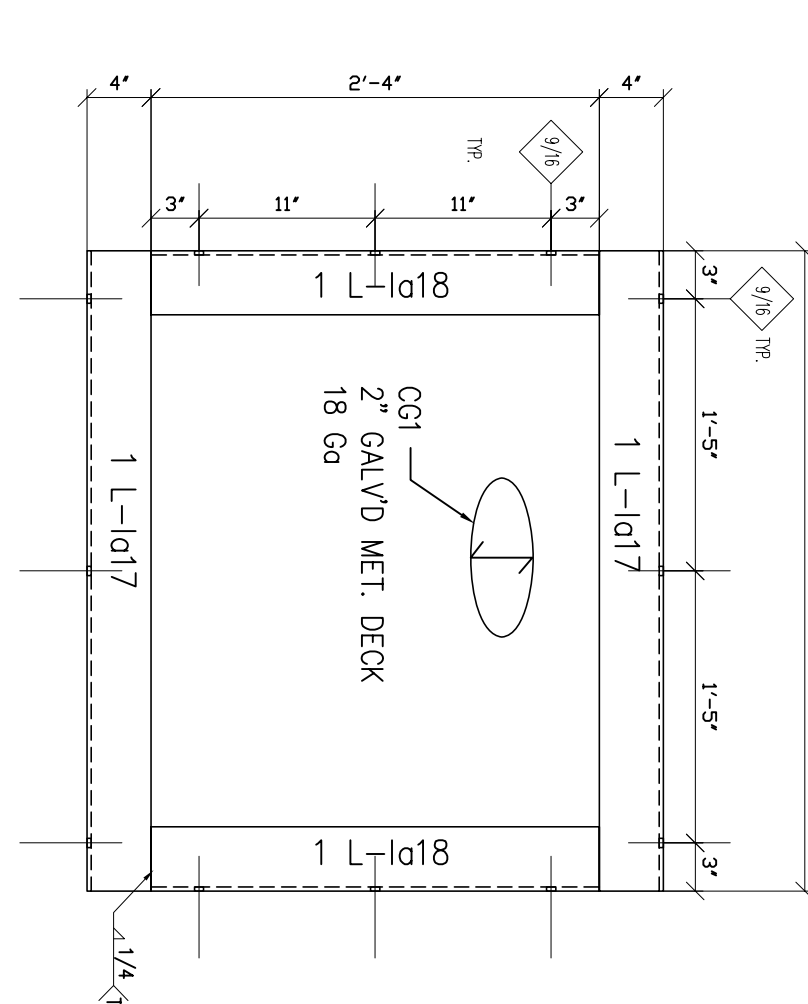
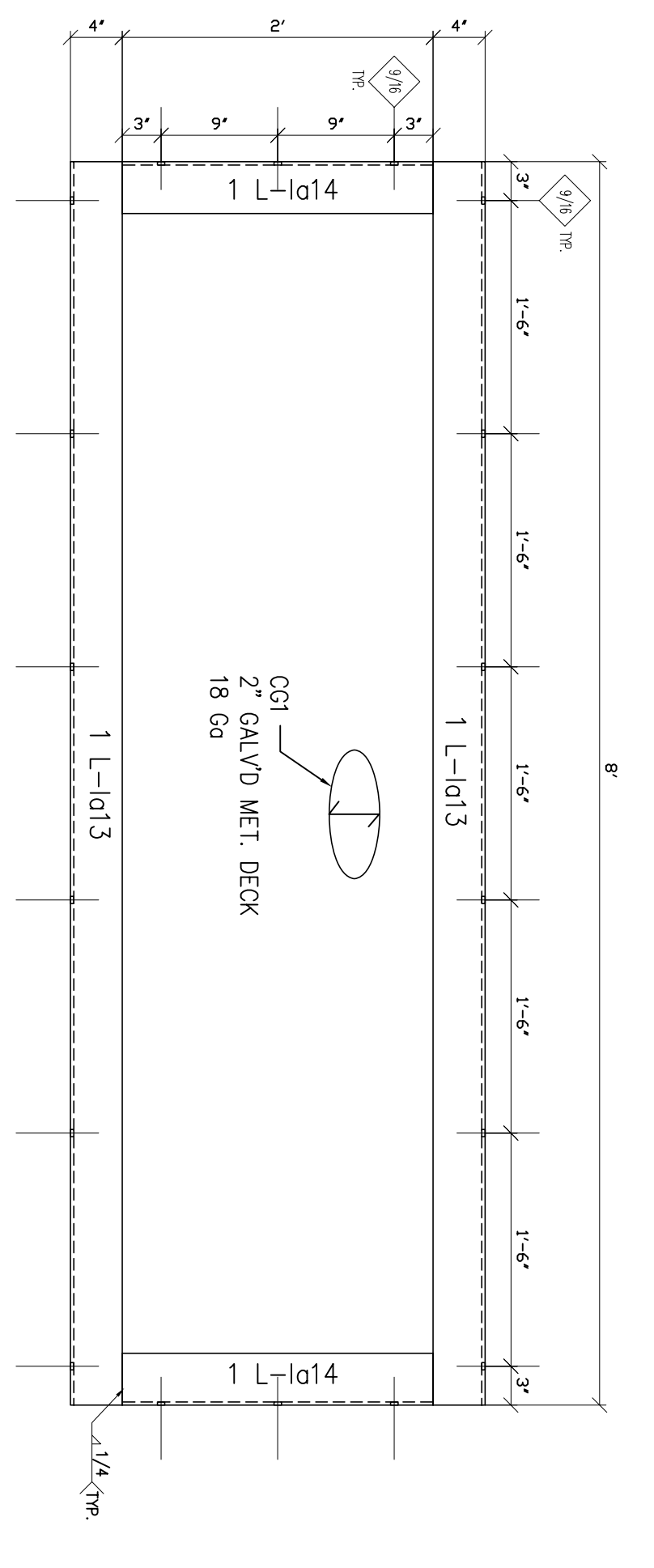
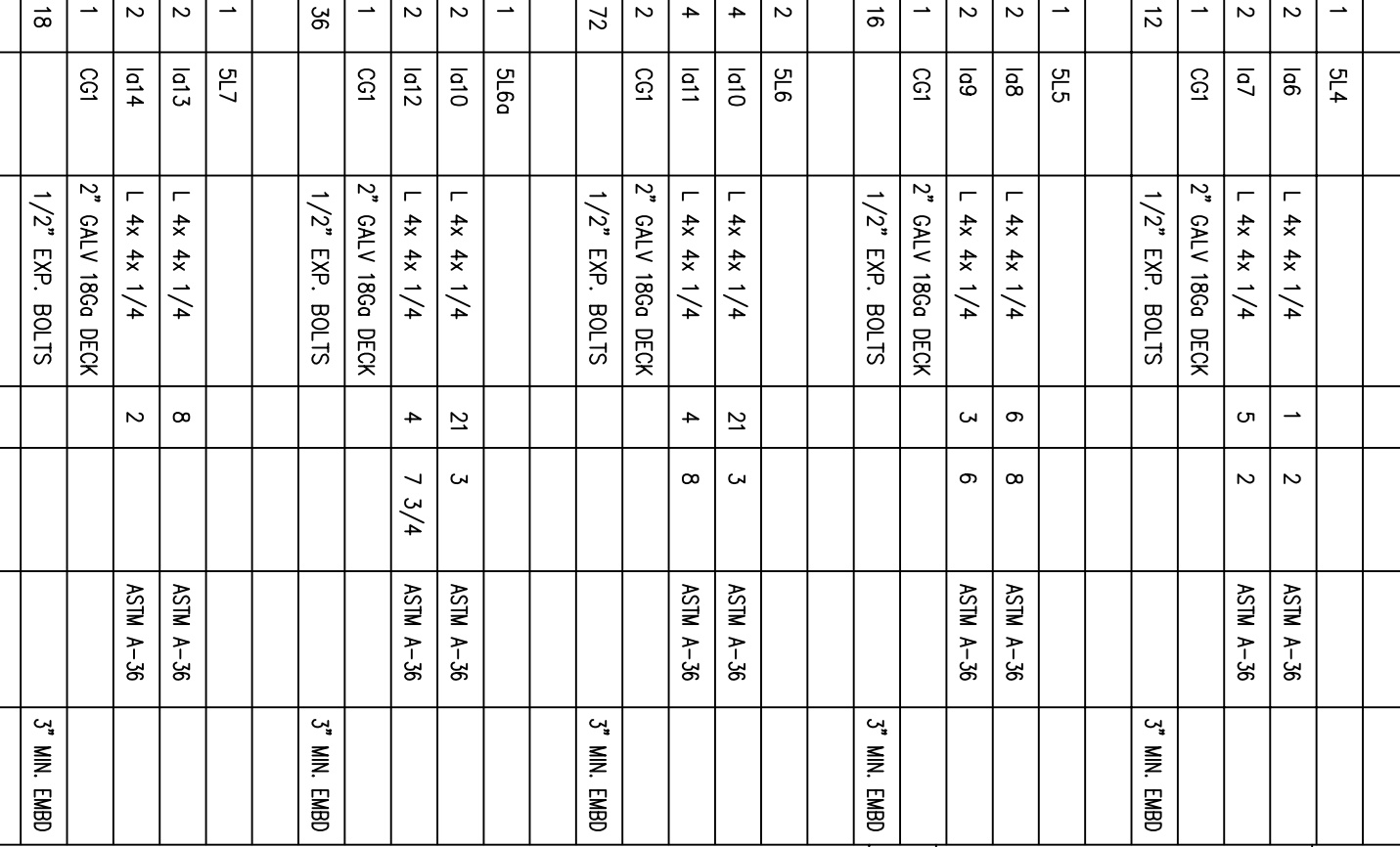
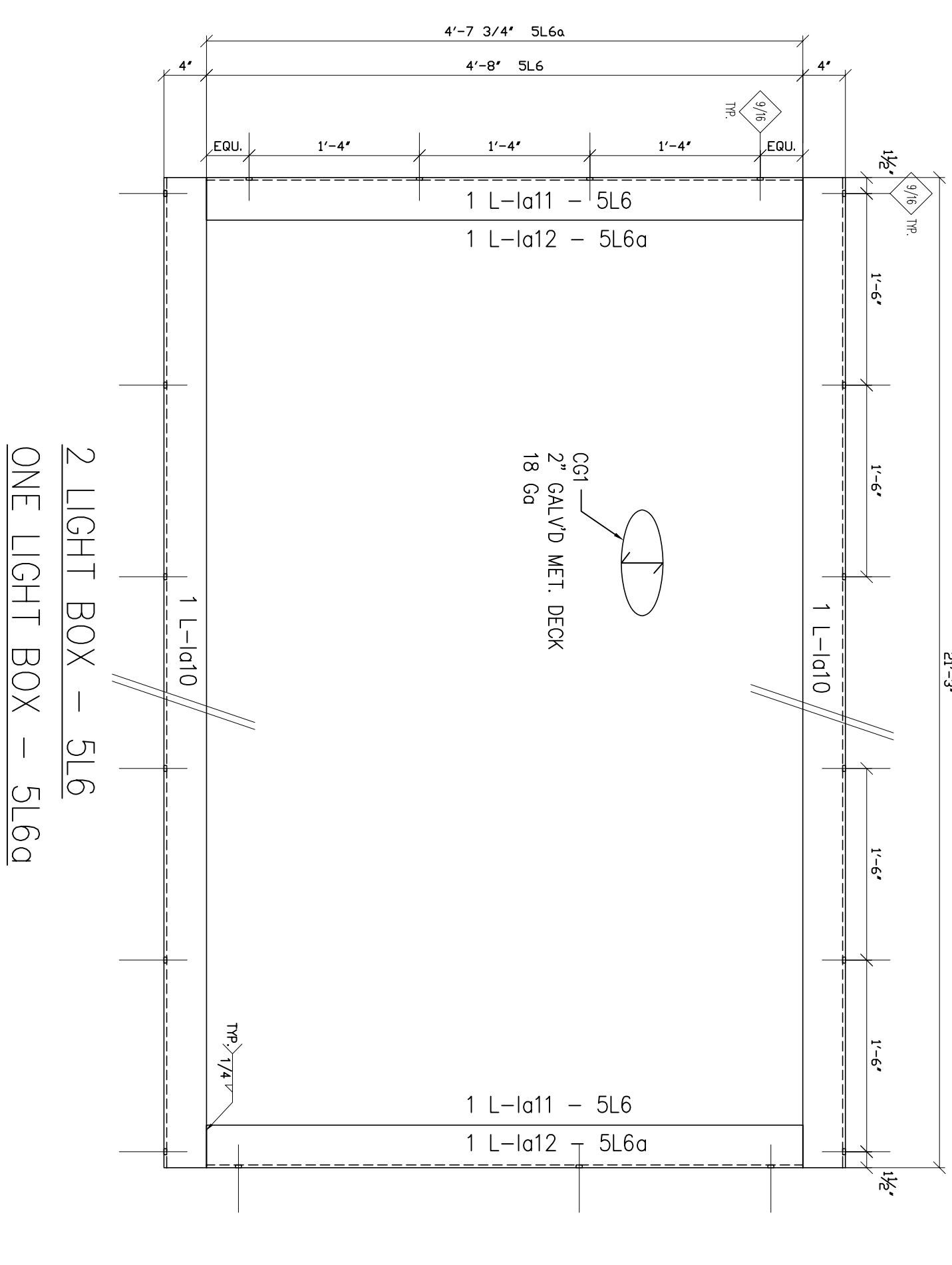
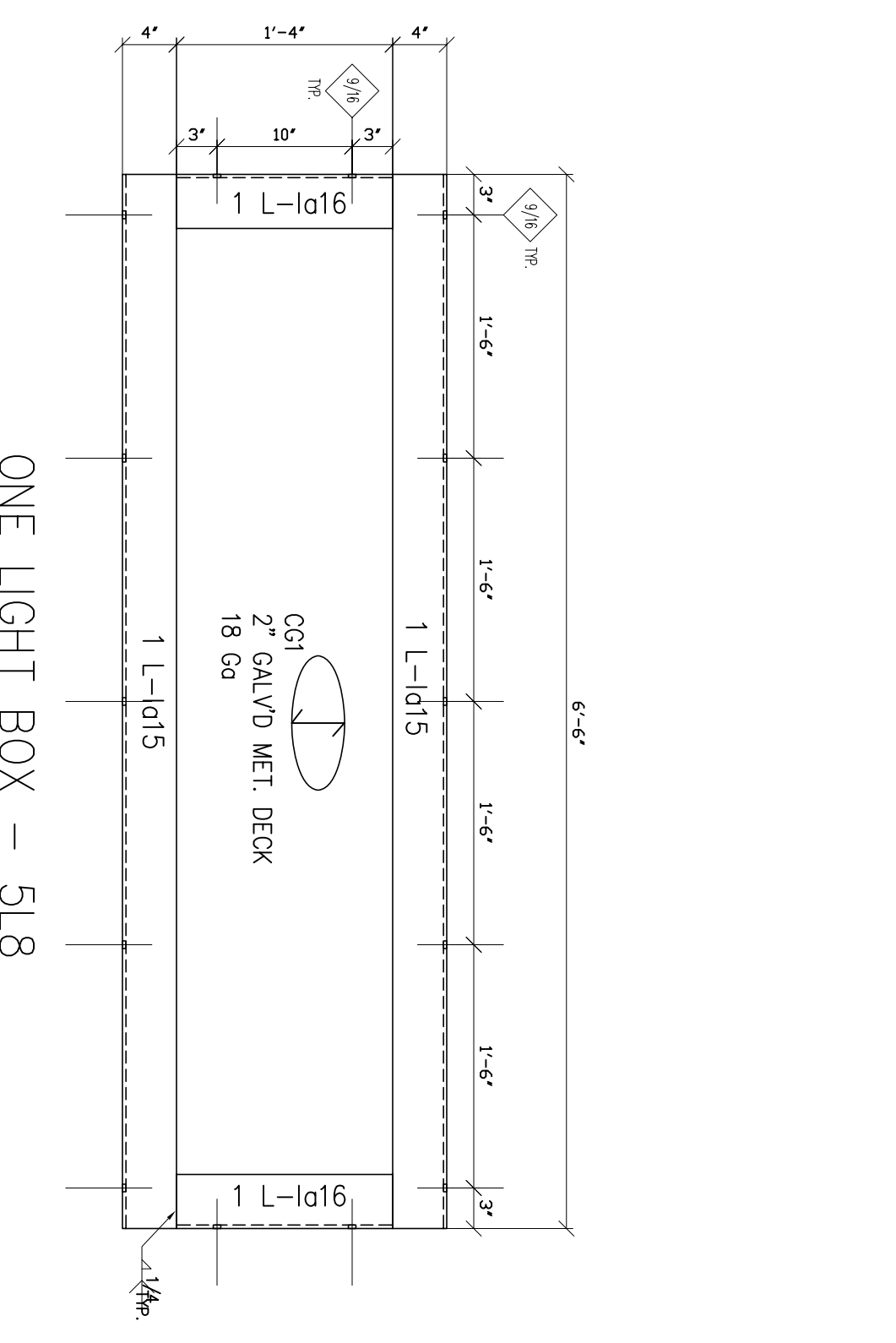
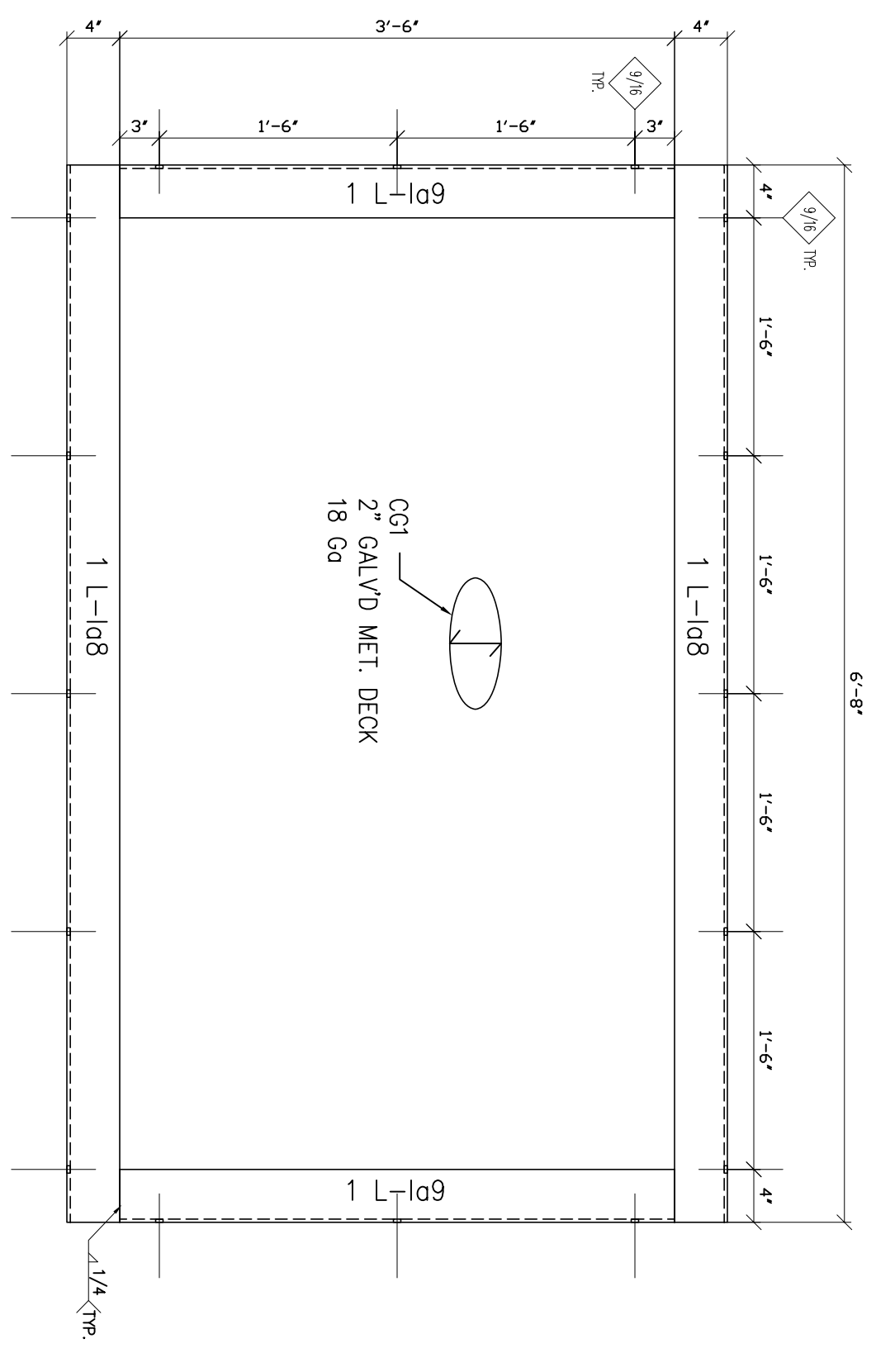
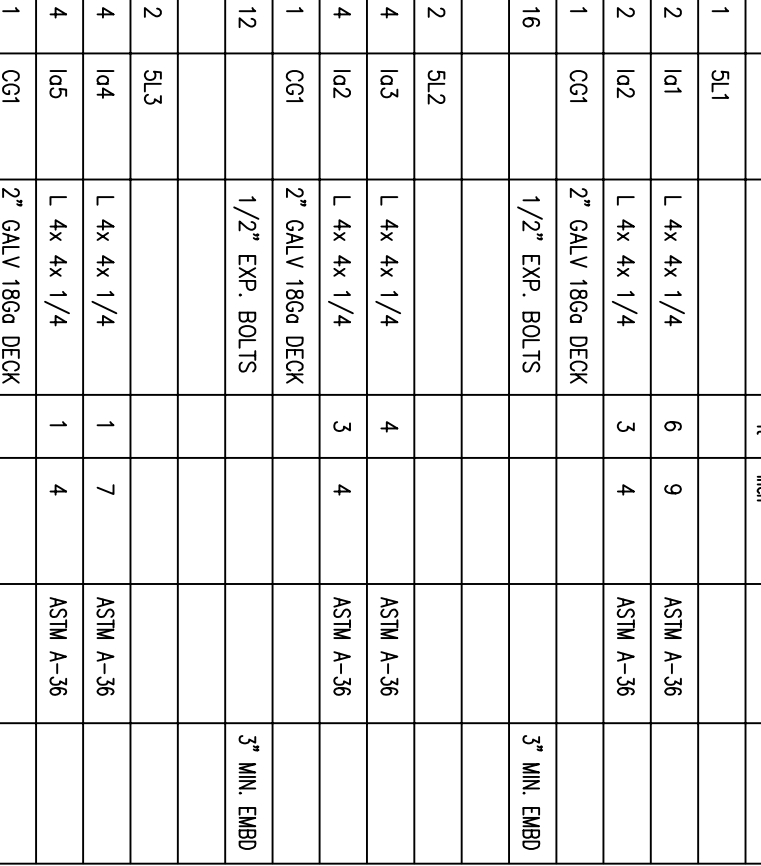
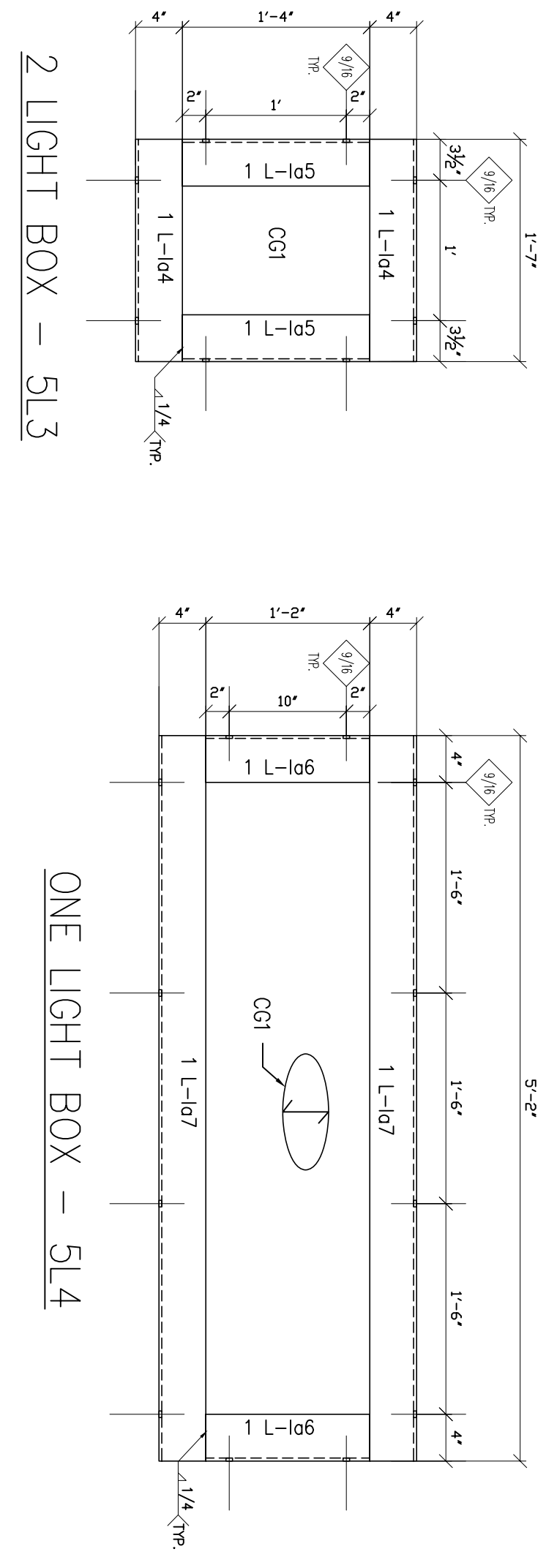
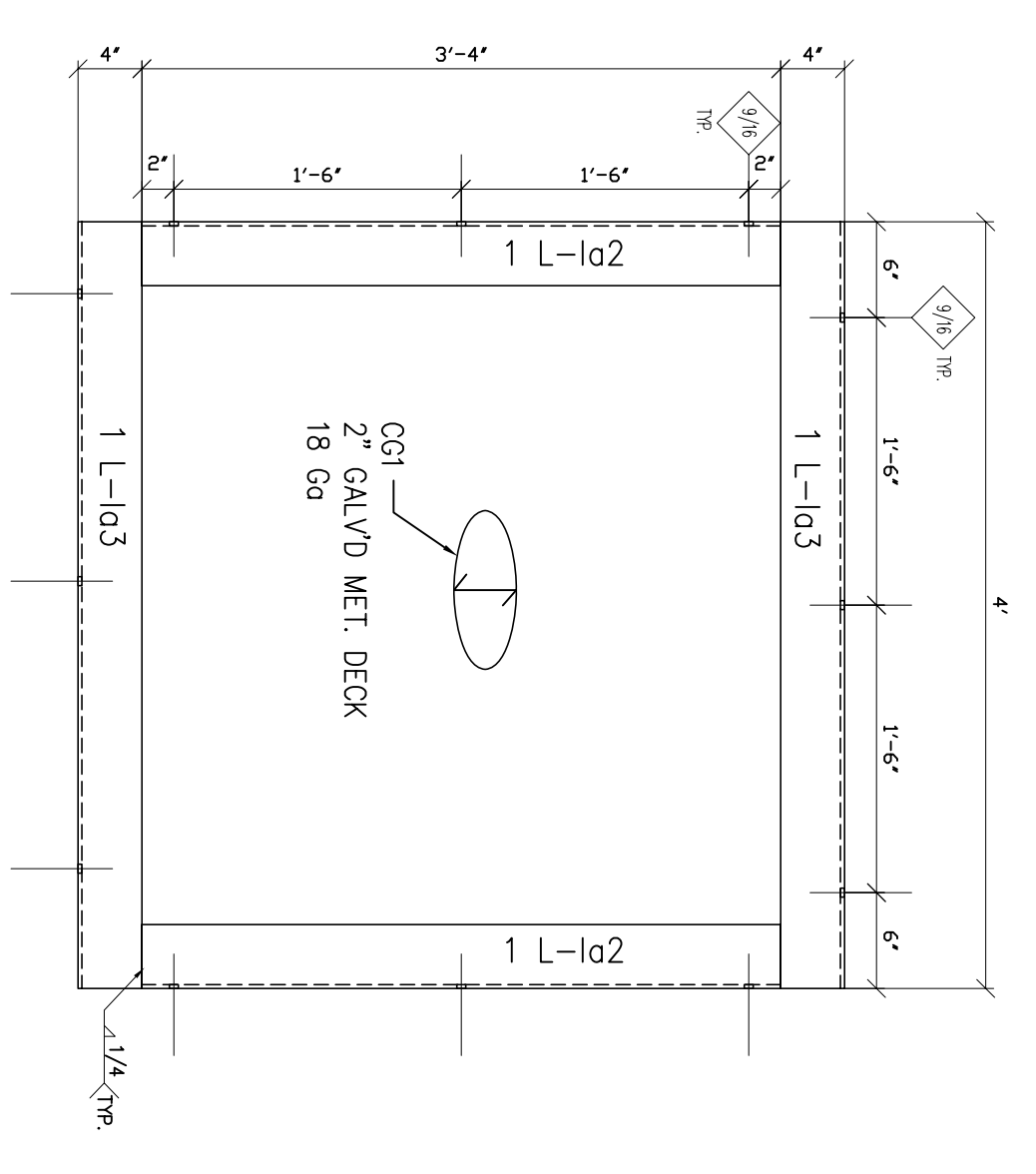
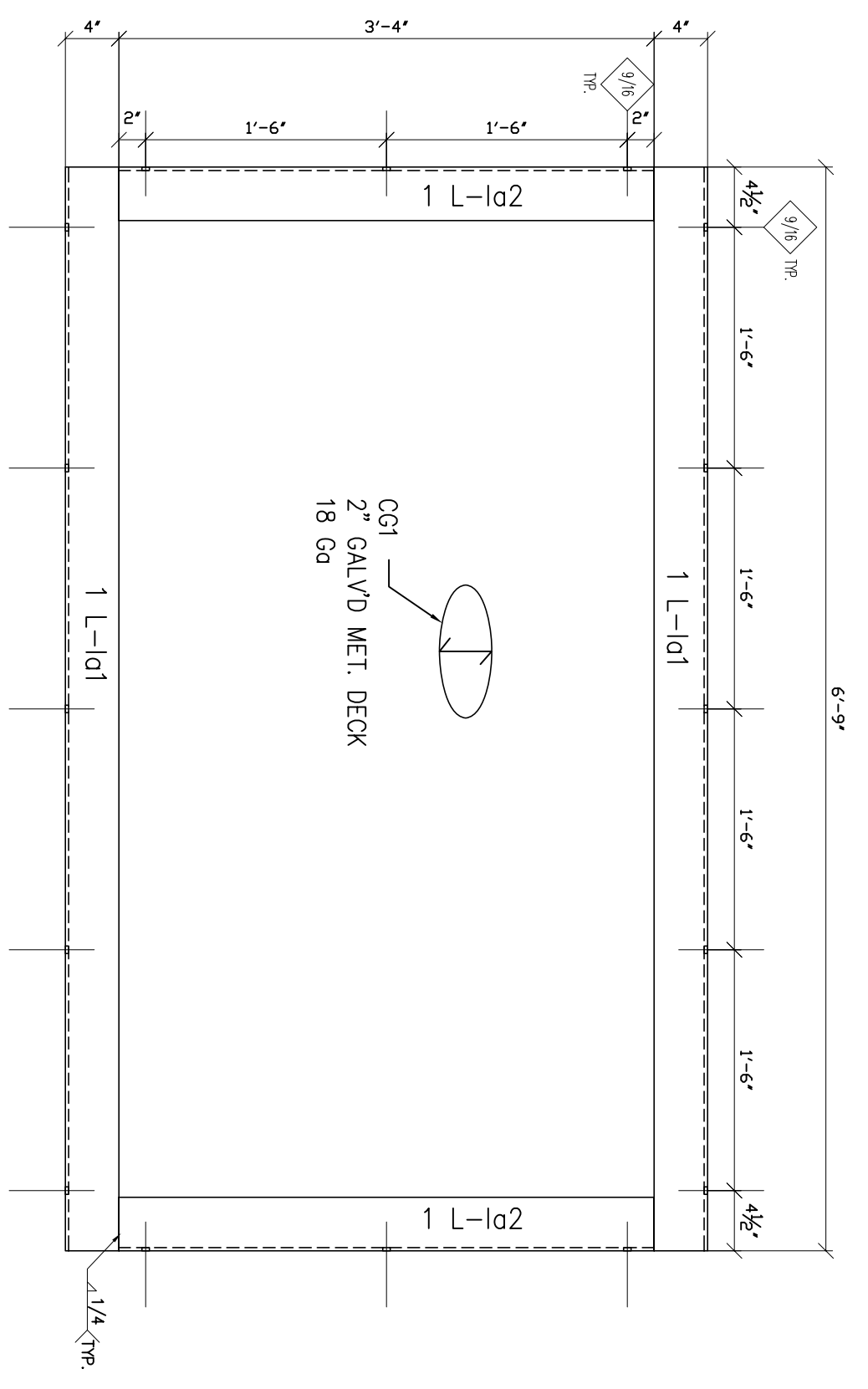
FABRICATOR  
**WRIGHT'S IRON & STEEL WORKS**  
 12314 Old Gordonsville Rd., Orange, VA 22960  
 (540) 661 0110

DATE:  
 08-22-05  
 JOB NO.  
 WS-00705  
 DRAWN BY: E.T  
 CHECKED BY J.C

FIELD VERIFY  
 ALL DIMENSIONS  
 DO NOT SCALE DRAWINGS

5-6

SHEET NO.



QTY	MARK	DESCRIPTION	LENGTH	WT	GR.	REMARK
1	5L1	L 4x4 1/4	6	9	ASTM A-36	
2	1a2	L 4x4 1/4	3	4	ASTM A-36	
1	CG1	2" GALV 18ga DECK				
16		1/2" EXP. BOLTS				3" MIN. EMBED
2	5L2	L 4x4 1/4	4	4	ASTM A-36	
4	1a2	L 4x4 1/4	3	4	ASTM A-36	
1	CG1	2" GALV 18ga DECK				
12		1/2" EXP. BOLTS				3" MIN. EMBED
2	5L3	L 4x4 1/4	1	7	ASTM A-36	
4	1a4	L 4x4 1/4	1	4	ASTM A-36	
4	1a5	L 4x4 1/4	1	4	ASTM A-36	
1	CG1	2" GALV 18ga DECK				
8		1/2" EXP. BOLTS				3" MIN. EMBED
1	5L4	L 4x4 1/4	1	2	ASTM A-36	
2	1a6	L 4x4 1/4	5	2	ASTM A-36	
1	CG1	2" GALV 18ga DECK				
12		1/2" EXP. BOLTS				3" MIN. EMBED
1	5L5	L 4x4 1/4	6	8	ASTM A-36	
2	1a8	L 4x4 1/4	3	6	ASTM A-36	
2	1a9	L 4x4 1/4	3	6	ASTM A-36	
1	CG1	2" GALV 18ga DECK				
16		1/2" EXP. BOLTS				3" MIN. EMBED
2	5L6	L 4x4 1/4	21	3	ASTM A-36	
4	1a10	L 4x4 1/4	21	3	ASTM A-36	
4	1a11	L 4x4 1/4	4	8	ASTM A-36	
2	CG1	2" GALV 18ga DECK				
72		1/2" EXP. BOLTS				3" MIN. EMBED
1	5L6a	L 4x4 1/4	21	3	ASTM A-36	
2	1a10	L 4x4 1/4	4	7 3/4	ASTM A-36	
1	CG1	2" GALV 18ga DECK				
36		1/2" EXP. BOLTS				3" MIN. EMBED
1	5L7	L 4x4 1/4	8		ASTM A-36	
2	1a13	L 4x4 1/4	2		ASTM A-36	
2	1a14	L 4x4 1/4	2		ASTM A-36	
1	CG1	2" GALV 18ga DECK				
18		1/2" EXP. BOLTS				3" MIN. EMBED
1	5L8	L 4x4 1/4	6	6	ASTM A-36	
2	1a15	L 4x4 1/4	1	4	ASTM A-36	
1	CG1	2" GALV 18ga DECK				
14		1/2" EXP. BOLTS				3" MIN. EMBED
1	5L9	L 4x4 1/4	3	4	ASTM A-36	
2	1a17	L 4x4 1/4	2	4	ASTM A-36	
1	CG1	2" GALV 18ga DECK				
12		1/2" EXP. BOLTS				3" MIN. EMBED
1	5L10	L 4x4 1/4	4	2	ASTM A-36	
2	1a19	L 4x4 1/4	8		ASTM A-36	
1	CG1	2" GALV 18ga DECK				
12		1/2" EXP. BOLTS				3" MIN. EMBED
1	5L11	L 4x4 1/4	2	9	ASTM A-36	
2	1a21	L 4x4 1/4	10		ASTM A-36	
2	1a22	L 4x4 1/4	10		ASTM A-36	
1	CG1	2" GALV 18ga DECK				
10		1/2" EXP. BOLTS				3" MIN. EMBED
1	5L12	L 4x4 1/4	10	4	ASTM A-36	
2	1a23	L 4x4 1/4	5	4	ASTM A-36	
2	1a24	L 4x4 1/4	5	4	ASTM A-36	
6	1a25	L 4x4 1/4	4	4	ASTM A-36	
6	P2	FL 1/2x2	2		VERIFY	ASTM A-36
1	CG1	2" GALV 18ga DECK			VERIFY	ASTM A-36
26		1/2" EXP. BOLTS				3" MIN. EMBED
2	4F1	PL 12ga AS SHOWN	1			
4	1b1	PL 12ga AS SHOWN	2			
2	4F2	PL 12ga AS SHOWN	2			
1	4F3	PL 12ga AS SHOWN	12	10		
4	1b3	PL 12ga AS SHOWN	12	10		
1	4F4	PL 12ga AS SHOWN	1	6		
4	1b4	PL 12ga AS SHOWN	1	6		

DATE: 08-22-05  
 PROJECT: INTERNATIONAL BROTHERHOOD OF TEAMSTERS ANNEXE & HEADQUARTERS  
 LEO A DALY  
 REV. 0 Issue for approval  
 DATE: 08-22-05  
 DETAILER: UNITY USA Inc.  
 Tel: (703) 286-7954  
 www.unitydrafting.com info@unitydrafting.com  
 4006 Quiet Creek Drive, Fairfax, VA 22033

FABRICATOR: WRIGHT'S IRON & STEEL WORKS  
 12314 Old Gordonsville Rd., Orange, VA 22960  
 (540) 661 0110

SHEET NO. 6-1  
 DRAWN BY: E.T  
 CHECKED BY: J.C